

Mitsubitsi Fuso CANTER 9C18, Refuse collection



Scanvo Trucks Danmark A/S
Hårup Skovvej 7, Hårup
8600 Silkeborg

Sælger
Salgsafdeling
salg@scanvo.dk
+45 8724 4370
+45 3046 2148 / +45 2498 2148

Basis		Engine and transmission		Chassis	
Type	Truck	Engine	4 cyl.. 3,0	Wheelbase mm	3850
Aksel	4x2	Hp	180	Axle load, front kg	3100
Stand	Fine	Km	192000	Axle load, rear kg	6000
Registration		Gear box	Aut shift	Tyres	
Model year	2016	EURO type	6	% remaining	40/20 - 50/90
Reg. date	11-01-2016	Number of tanks	1	Dimensions	205/75R17,5
Reg. no.	CV54596	Litre of tank	100	Brakes	
Latest inspection	01-03-2024	Ad-blue	✓	Disc brake	✓
Chassis number (VIN)	TYBFECX1GLDY07549	PTO gearbox	✓	ABS	✓
Ref. no.	7587	Adblue litre of tank	20	Suspension	
Cab		Without clutch pedal	✓	Front, conventional	✓
Cab type		Fahrhaus ausen		Rear, conventional	✓
Rear-view camera	✓	Color	white	Weight	
Radio	✓	Blitz lights	✓	Loading capacity kg	2850
				Overall weight kg	8550
				Tare weight kg	5700

Beskrivelse

Small waste disposal truck

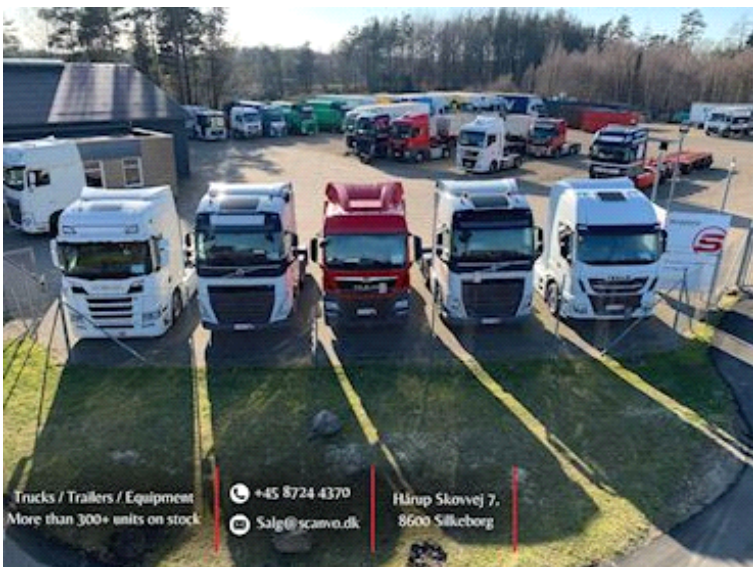
Mitsubishi Fuso Canter 9C18 Euro 6

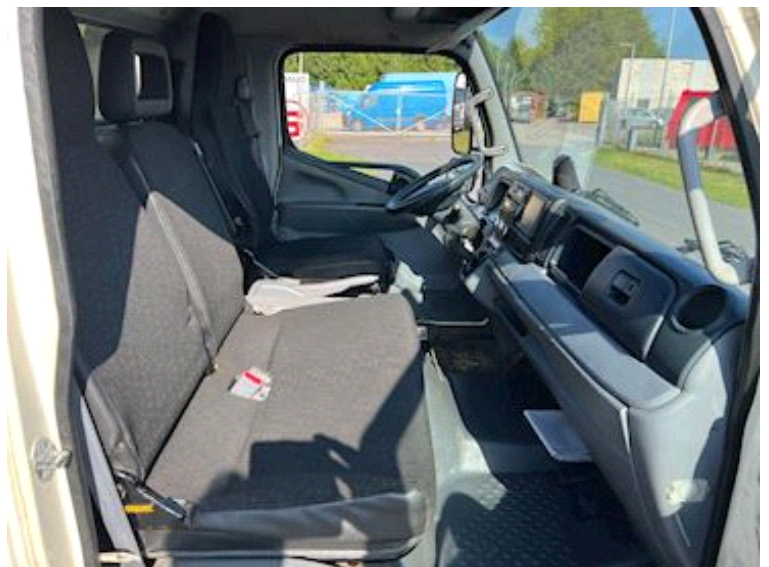
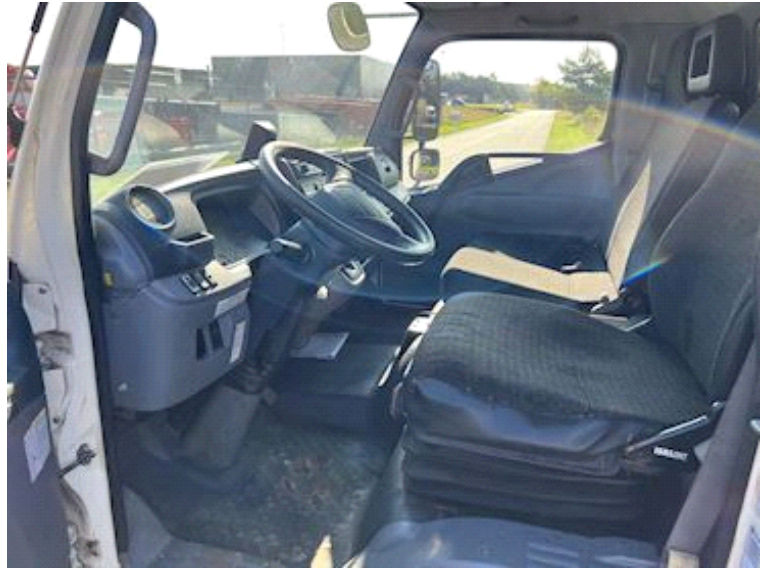
HEW 8 m3 day waste disposal facility - lift for mini containers
max total height 2250 mm and length 7000 mm - width 2050 mm
short axle distance, so it can enter where the others give up!

Spec: axle distance 3850 - Aut gearbox - 2 man passenger seat

Contact Scanvo Trucks +45 87244370 - email salg@scanvo.dk

See more exciting topics on our website www.scanvo.dk





Nye og brugte containere
Mere end 100 enheder!

