

# Scania R500 A 6x2/4 LB mega, Tractor



Scanvo Trucks Danmark A/S  
 Hårup Skovvej 7, Hårup  
 8600 Silkeborg

Sælger  
 Salgsafdeling  
 salg@scanvo.dk  
 +45 8724 4370  
 +45 3046 2148 / +45 2498 2148

Basis		Suspension		Cab	
Type	Tractor Unit	Front, air	✓	Cab type	CR20 H
Aksel	6x2/4	Rear, air	✓	Number of sleeper berths	1
Stand	Very fine	<b>Brakes</b>		Engine cab heater	✓
<b>Registration</b>		Disc brake	✓	Radio	✓
Model year	2019	ABS	✓	Refrigerator	✓
Reg. date	06-06-2019	Retarder	✓	Navigation	✓
Reg. no.	CK52868	<b>Fahrhaus ausen</b>		Coffee machine	✓
Latest inspection	20-08-2025	Color	Ivory White	Leather seats	✓
Chassis number (VIN)	YS2R6X20005551924	Spoilers	✓	Lane-assistent	✓
Ref. no.	7905	Fog lights	✓	Distance radar	✓
<b>Engine and transmission</b>		Blitz lights	✓	Multifunction steering wheel	✓
Hp	500	LED front light	✓	Air suspension cab	✓
Km	812600	<b>Chassis</b>		Automatic air conditioning	✓
Gear box	GRS905R Opticruise aut shift	Wheelbase mm	4100	Automatic disaster Brake (FCW)	✓
EURO type	6	Axle load, front kg	7500	Radial bolster	
Number of tanks	1	Axle load, rear kg	19000	Fixed	✓
Litre of tank	300 + 175	Working light	✓	Height mm	1040
Adblue litre of tank	80	Liftable axles	2.	<b>Weight</b>	
Without clutch pedal	✓	Aluminium cover	✓	Overall weight kg	26000
<b>Tyres</b>		Steerable axle	✓	Tare weight kg	9040
% remaining	30 - 15 - 60			King pin kg	16960
<b>Dimensions</b>					
385/55R22,5 - 385/55R22,5 - 295/60R22,5					

## Beskrivelse

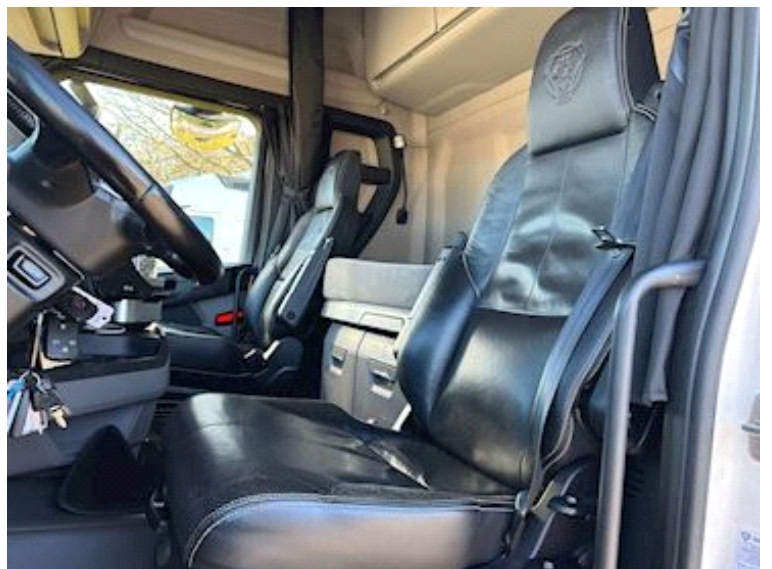
Scania R500 A 6x2/4 LB mega / low factory built tractor

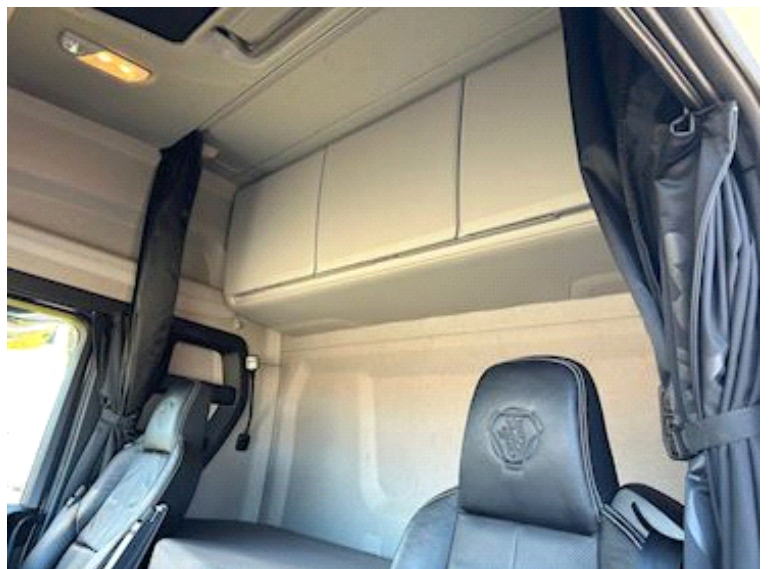
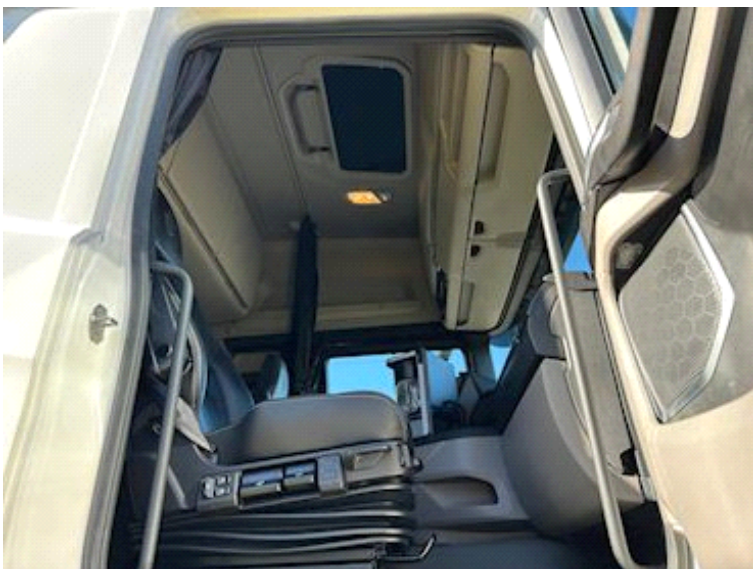
Fixed stool stool height 1040mm can be raised in driving position - aluminum cover in front of stool - shut-off valves for air hoses - 2 x LED lights at the crane bridge and 2 pcs. LED in the rear of the chassis and in the step boxes in the front - 24 volt power socket - 300 ltr. +175 ltr. diesel tanks - 80 ltr. AD blue tank

Euro 6 engine - Opticruise aut. gearshift - retarder - air suspension front + rear - lift + steerable middle axle

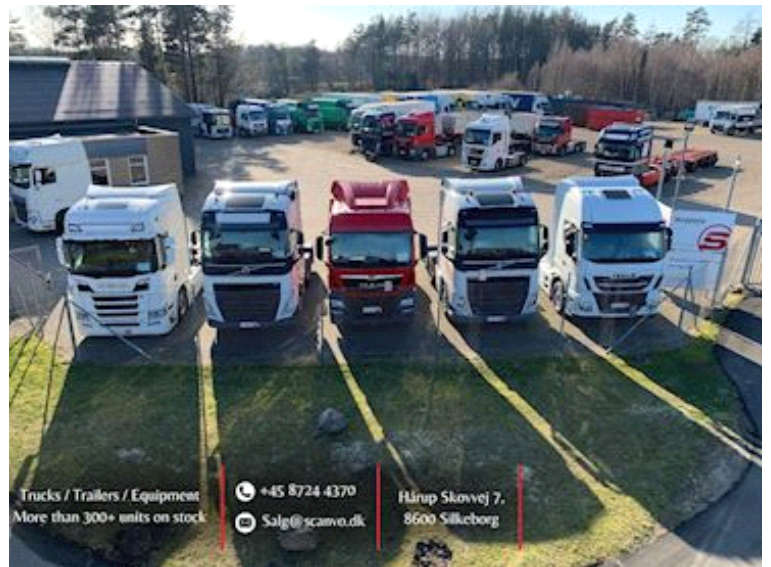
CR20 H Sleeper cab with high roof - air in the cab - 1 berth - air conditioning + stand air conditioning - leather seats - cabinets on the rear wall - coffee maker - 6KW engine/cabin heater - refrigerator - radio - extra high beams on the sun visor - fog lights - LED headlights - navigation - engine cover in light gray color - flashers in the front grille

In very good condition - serviced by Scania - last service with oil change and filters performed at km 795,656 d 16/10-2025 - gearbox rear gear oil changed at km 757,453 d 16/4-2025









Nye og brugte containere  
Mere end 100 enheder!

