

Iveco Daily 70C18 - dobbelt cab, Closed box



Scanvo Trucks Danmark A/S
 Hårup Skovvej 7, Hårup
 8600 Silkeborg

Sælger
 Salgsafdeling
 salg@scanvo.dk
 +45 8724 4370
 +45 3046 2148 / +45 2498 2148

Basis	
Type	Truck
Aksel	4x2
Stand	As new

Registration	
Model year	2021
Reg. date	18-11-2021
Reg. no.	DD91509
Latest inspection	06-10-2025
Chassis number (VIN)	ZCFC670DX05415426
Ref. no.	7684

Fahrhaus ausen	
Color	RAL 5024 Pastellblau
LED front light	✓

Chassis	
Wheelbase mm	4350
Axle load, front kg	2500
Axle load, rear kg	5350
Working light	✓

Engine and transmission	
Engine	3,0 ltr
Hp	180
Km	81900
Gear box	Aut shift
EURO type	6
Number of tanks	1
Ad-blue	✓
Without clutch pedal	✓

Cab	
Cab type	Dobbel - sleeper cab
Air-conditioning	✓
Number of sleeper berths	1
Rear-view camera	✓
Engine cab heater	✓
Radio	✓
Number of seats	2 + fører

Tyres	
% remaining	50 - 75
Dimensions	225/75R16

Brakes	
Disc brake	✓
ABS	✓

Coupling	
Ball hitch (kg)	3500
Ball Draught	✓

Suspension	
Front, parable	✓
Rear, conventional	✓

Weight	
Loading capacity kg	2750
Overall weight kg	7000

Beskrivelse

Iveco Daily 70C18 double / sleeping cabin

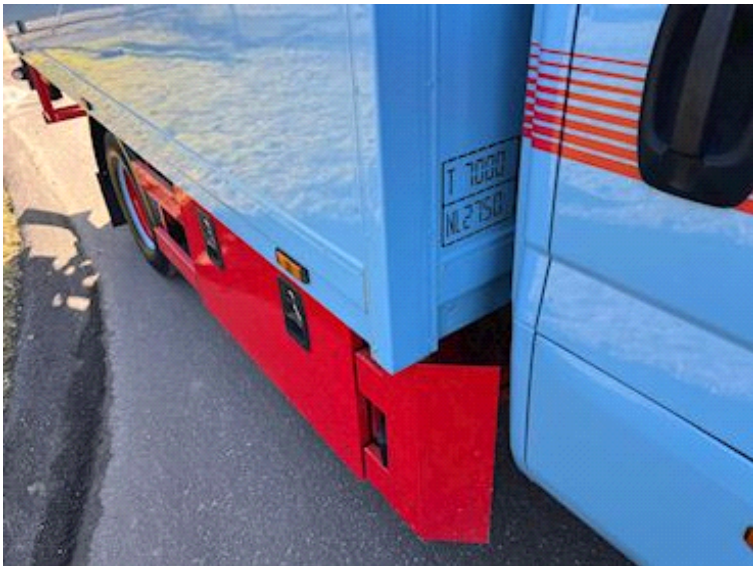
Fiberglass box from Farre Karosseri with built-in magazine for various moving equipment
 Internal bed dimensions approx. L 4100 + magazine 1300 mm x H 2300 x W 2200 mm - compartment content 20.7m3 + magazine space above cab 2.2 m3
 3 recessed tie rows in the box with 500 - 1200 - 1900 mm height - ceiling lamps
 Webastro Air top 5000 air diesel powered boiler built into the box - as well as stations battery station in toolbox which can keep the boiler running during stationary use as well as 220 volt charging plug with inverter for 12 volt battery
 2 tool boxes under the shelf + 2 LED lights
 750 kg Zepro model ZLU 75-110 SA lift - remote control - 1450 mm aluminum lift plate
 Ball hitch for 3,500 kg trailer

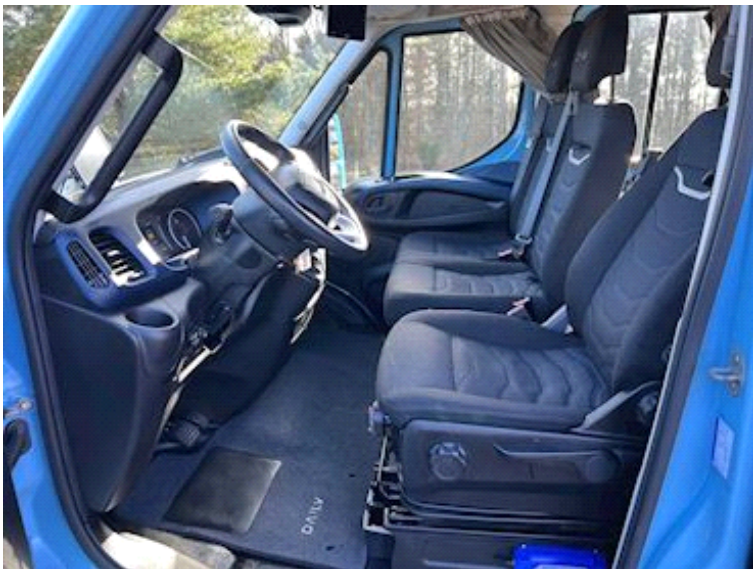
3 seats in total. in the cabin incl. driver - berth in the crew cabin - air conditioning - engine / cabin heater - rear view camera

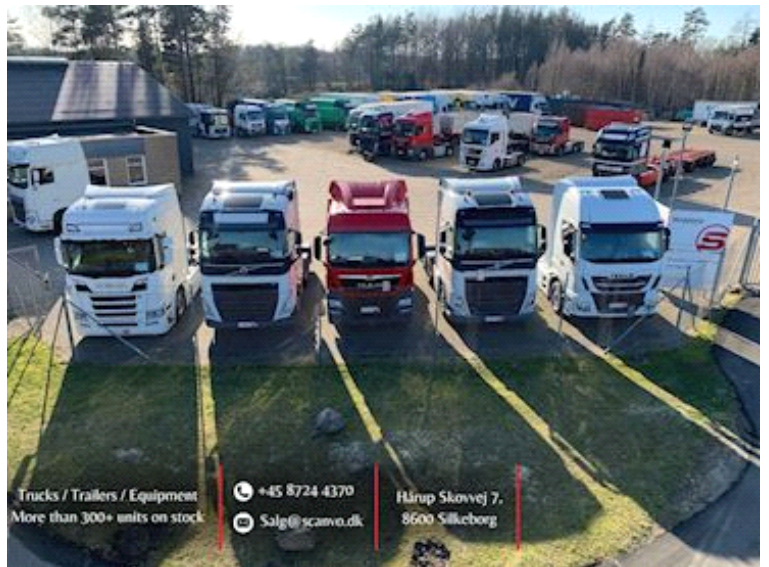
Cab + box painted in color scale RAL 5024 Pastelblau - appears almost as new
 Internal service 1/2024 with oil change and oil + fuel filters next service km 105,609

Contact Scanvo for more info on +45 87244370 - email salg@scanvo.dk









Trucks / Trailers / Equipment
More than 300+ units on stock

+45 8724 4370
Salg@scanvo.dk

Hårup Skovvej 7,
8600 Silkeborg

