

Kel-Berg D24B3 6,0 - 6,5 mtr. containere, Transfer



Scanvo Trucks Danmark A/S
 Hårup Skovvej 7, Hårup
 8600 Silkeborg

Sælger
 Salgsafdeling
 salg@scanvo.dk
 +45 8724 4370
 +45 3046 2148 / +45 2498 2148

Registration	
Model year	2016
Reg. date	11-04-2016
Reg. no.	EZ1973
Latest inspection	15-04-2026
Chassis number (VIN)	SKBD24B30GKE19226
Ref. no.	7814

Basis	
Type	Trailer
Aksel	3
Stand	Fine

Tyres	
% remaining	90/90 - 40/50 - 80/80
Dimensions	265/70R19,5

Brakes	
Drum brakes	✓
ABS	✓

Weight	
Loading capacity kg	18800
Overall weight kg	24000
Tare weight kg	5200

Coupling	
Electrical coupling	EBS + 15 polet lysstik
Air-coupling	duromatic
Manufacturer	57mm træk øje
Variable drawbar	ja
Coupling height mm	800

Tippers	
3-way	✓

Dimensions	
Internal length mm	5900
Truck bed height mm	1080
Suspension	
Air	✓
Chassis	
Axle load, front kg	9000
Axle load, rear kg	9000 + 9000
Toolbox	✓
Wheelbase to 1. axel mm	3090
Total length mm max 8800 - min 8200 incl. gaffelstykke ibag	
Hydraulic	✓
Shaft type	BPW
Liftable axles	2.
Fixed bumper	✓

Beskrivelse

Kelberg Type D24B3 3 axle transfer trailer with 3 way tip - for 6000 to 6500 mm containers

5900 mm on flat piece - 300 mm to the center of the container roller innermost position + it extends 100 mm further - fork piece can be pulled 250 mm further out to the fixed bumper so it only has an overhang of 250 mm

2 x 2 pcs. external container locks - fixed bumper - plastic toolbox

Sliding drawbar with front part 2000 to center drawbar bolts + 500 mm forward to front edge - coupling length is 8400 mm + 400mm to fork piece for container roller - can be reduced by 600 mm - coupling height 800 mm - 57mm towing eye

BPW axles - air suspension with raise/lower valves - axle lift on 2nd axle - drum brakes - 265/70R19.5 with good tire condition

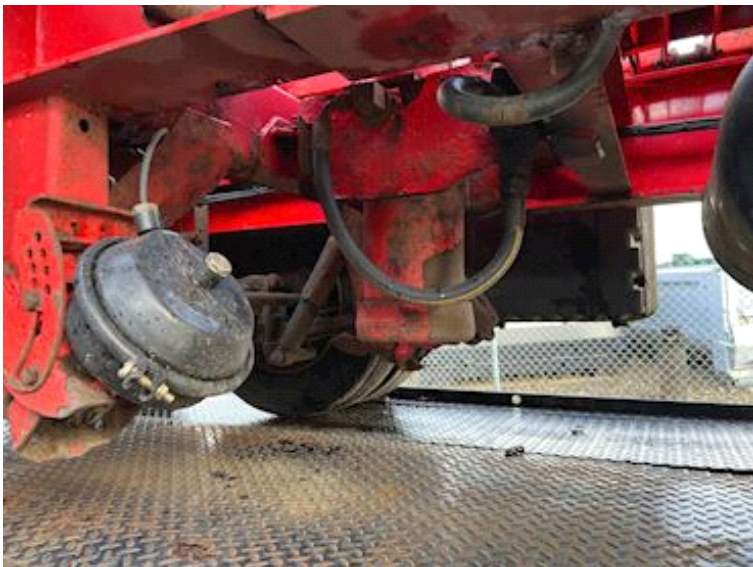
2 pcs. LED reverse + work lights under the bed at 1st axle + 2 pcs. in the rear - LED tail lights

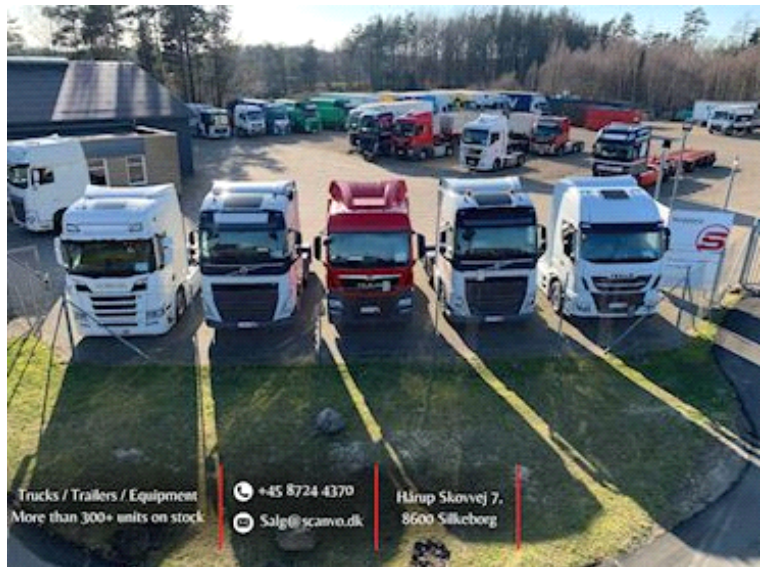
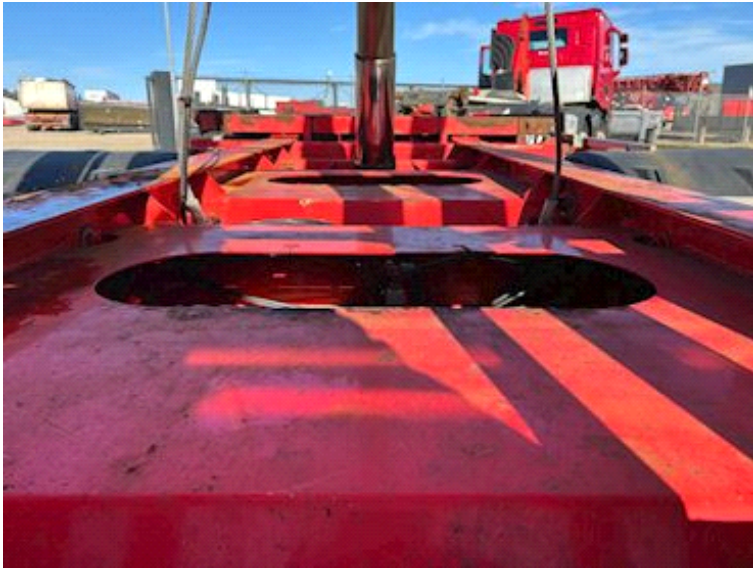
Appears in good condition on chassis considering the year, however rims and upper part of the bed need painting - red chassis frame

All brakes checked and greased - 2 pcs. air tanks + 2 pcs. brake cylinder replaced - towbar bolts + bushings replaced - 1 pc. air bellows - bolts in slewing ring replaced delivered with a new inspection from April 2026

Contact Scanvo +45 87244370 or email via email salg@scanvo.dk

Always a large selection of newer transport equipment - as well as a large selection of new and used hoisting containers - see more at www.scanvo.dk
 Send feedback





Trucks / Trailers / Equipment
More than 300+ units on stock

+45 8724 4370
Salg@scanvo.dk

Hårup Skovvej 7,
8600 Silkeborg

