



MAN TGL 8-220 4x2 BL incl. 2 stk veksellad, Container frame/Container



Scanvo Trucks Danmark A/S
Hårup Skovvej 7, Hårup
8600 Silkeborg

Sælger
Salgsafdeling
salg@scanvo.dk
+45 8724 4370
+45 3046 2148 / +45 2498 2148

Basis	
Type	Truck
Aksel	4x2
Stand	As new
Registration	
Model year	2021
Reg. date	10-08-2021
Reg. no.	DB62853
Latest inspection	11-09-2024
Chassis number (VIN)	WMA12DZZ5MY428857
Ref. no.	7760
Engine and transmission	
Hp	220
Km	174000
Gear box	Aut shift
EURO type	6
Number of tanks	1
Litre of tank	ca 200
Adblue litre of tank	xx
Without clutch pedal	✓
Fahrhaus ausen	
Color	Koks grå metallic kode 12D-0269 DL2 7586
extra spotlights	✓
Blitz lights	✓
Brakes	
Disc brake	✓
ABS	✓

Cab	
Cab type	Sleeper cab high roof
Number of sleeper berths	1
Mirror camera	✓
Rear-view camera	✓
Radio	✓
Refrigerator	✓
Lane-assistent	✓
Cab airheater	✓
Distance radar	✓
Air suspension cab	✓
Automatic air conditioning	✓
Automatic disaster Brake (FCW)	✓
Chassis	
Wheelbase mm	4100
Axle load, front kg	3700
Axle load, rear kg	5600
Closed sides	✓
Working light	✓
Tyres	
% remaining	30 - 90
Dimensions	245/70R17,5
Alloy wheels	✓
Coupling	
Ball hitch (kg)	3500
Coupling height mm	300
Ball Draught	✓

Suspension	
Front, parable	✓
Rear, air	✓
Dimensions	
External height mm	x
External width mm	2550
Internal height mm	2300
Internal width mm	2440
Internal length mm	5350
Load highness at back mm	2250
Light inside box	✓
Cubic meters	30
Truck bed height mm	1020
Weight	
Loading capacity kg	2120 med veksellad
Overall weight kg	8800
Tare weight kg	6680 med veksellad
King pin kg	4940 uden kasse
Total weight, low loader kg	GCW 18750
Doors	
Rear doors	✓
Lift	
Lift kg	1000
Make	zepro
Radio remote controle	✓
Hight at platform mm	1450
Model year	2021
Model	SU-130 SA
Serie no.	377629

Beskrivelse

MAN TGL 8-220 4x2 BL

Built with container locks - hydraulics to lift the front of the box when parking associated 2 pcs. fiberglass swap body box 30m3 - Internal dimensions L 5350 x H 2300 (clearance 2250 mm) x W 2440 mm - rear doors - 3 tie rows - plywood floor - LED lights in the roof - loading height 1020 mm - container lock height 880 mm Vertical Zepro 1000 kg lift - H 1450 x W 2000 mm folding alu. lift plate and remote control

Lifting bellows in front so the box can be removed and air-suspended rear axle
3500 kg ball hitch - with MXN connector for camera for trailer - chassis skirts

- AN OFFER YOU CAN'T REFUSE

Air-suspended rear axle - automatic gear shift - polished aluminum rims

Sleeper cab with high roof - air-suspended cab - 1 berth - air conditioning - oil boiler - overhead cabinets on rear wall - refrigerator

under the berth - inverter 24/220 volt - Bliz light - reversing camera - 2 LED lights in step box + 2 pcs. under the cab in front + 2 pcs. rear

Pt nedvejjet til 7.490 kg hvor lastevnen med veksellads kasse = 810 kg -

Kan sættes op til 8.800 kg med nyttelast = 2.120 kg

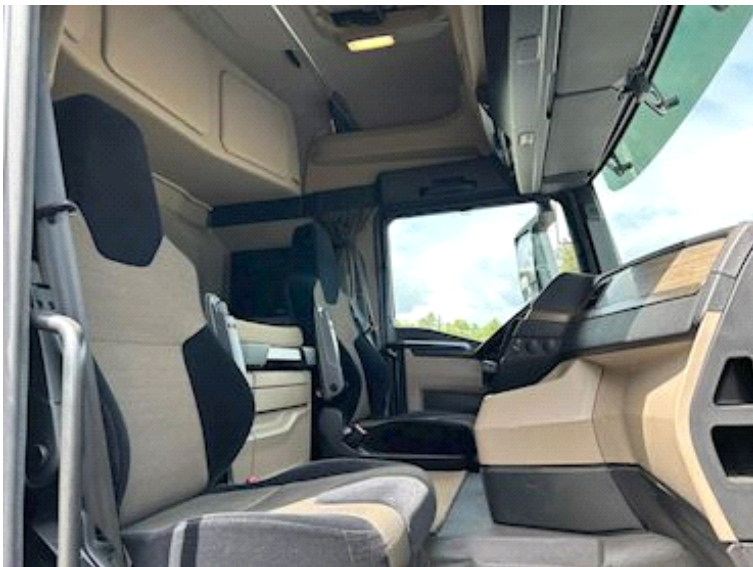
Appears like new!

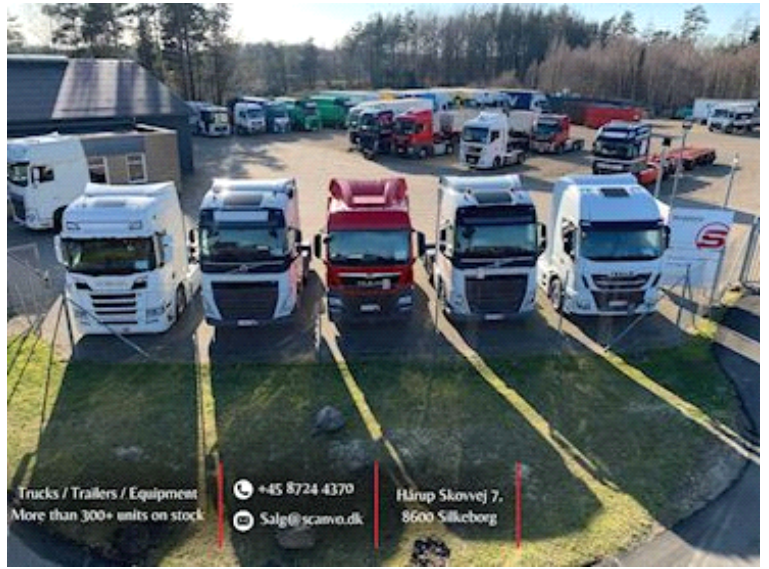
Contact Scanvo +45 87244370 or email salg@scanvo.dk

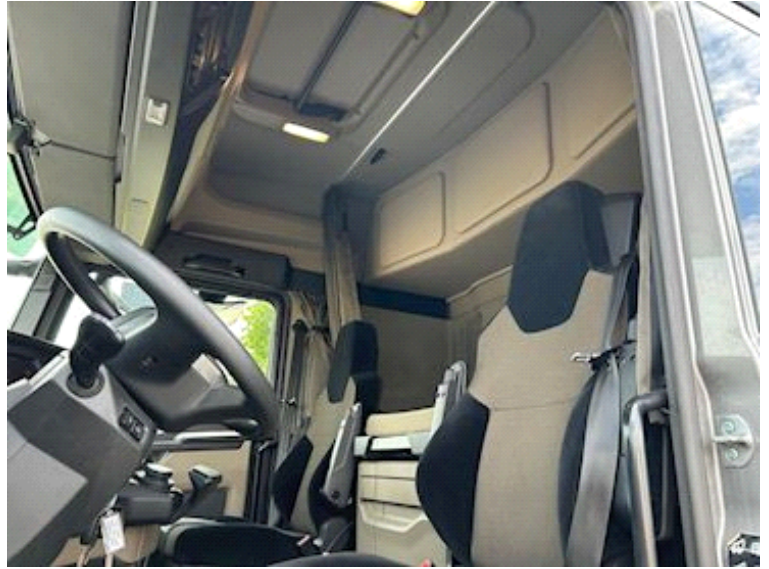
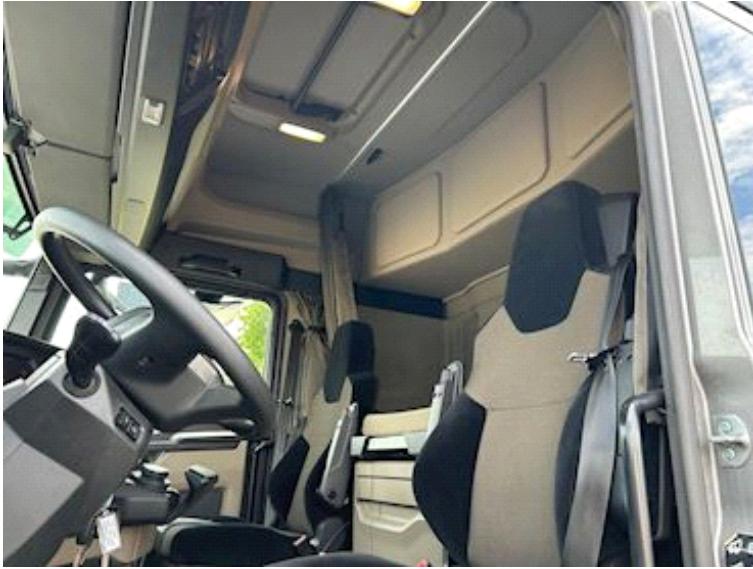
Always more than 300 units in stock see the wide selection www.scanvo.dk











Nye og brugte containere
Mere end 100 enheder!

