

Kel-Berg T363V 12,45 mtr Hardox 72m3 stål kasse, Tipper



Scanvo Trucks Danmark A/S
 Hårup Skovvej 7, Hårup
 8600 Silkeborg

Sælger
 Salgsafdeling
 salg@scanvo.dk
 +45 8724 4370
 +45 3046 2148 / +45 2498 2148

Basis	
Type	Semi-Trailer
Aksel	4
Stand	Very fine
Suspension	
Air	✓
Brakes	
Disc brake	✓
ABS	✓
Tyres	
% remaining	50/70 - 80/100 - 70/20 - 100/90
Dimensions	385/65R22,5
Weight	
Loading capacity kg	34700
Overall weight kg	48000
Tare weight kg	13300
King pin kg	18000

Chassis	
Toolbox	✓
Hydraulic	✓
Working light	✓
Self-tracking axle	✓
Shaft type	SAF
Liftable axles	1.
Fixed bumper	✓
Registration	
Model year	2019
Reg. date	31-01-2019
Reg. no.	CX5280
Latest inspection	07-04-2025
Chassis number (VIN)	SKBT48S43JKE22723
Ref. no.	7950
Tippers	
Rear tipper	✓

Dimensions	
External height mm	3930
Internal height mm	2400
Internal width mm	2400
Internal length mm	12450
Cubic meters	71,7
Doors	
Rear doors	✓
Grain limb	✓
Truck body / box	
Bottom	pæn jævn Hardox 450 5 mm
Height of boards mm	2400 mm - 4 mm Hardox 450
Box type	Stål kasse
Back doors	✓
Tent	
Roll tilt	✓

Beskrivelse

Kelberg 4 axle Hardox tip trailer

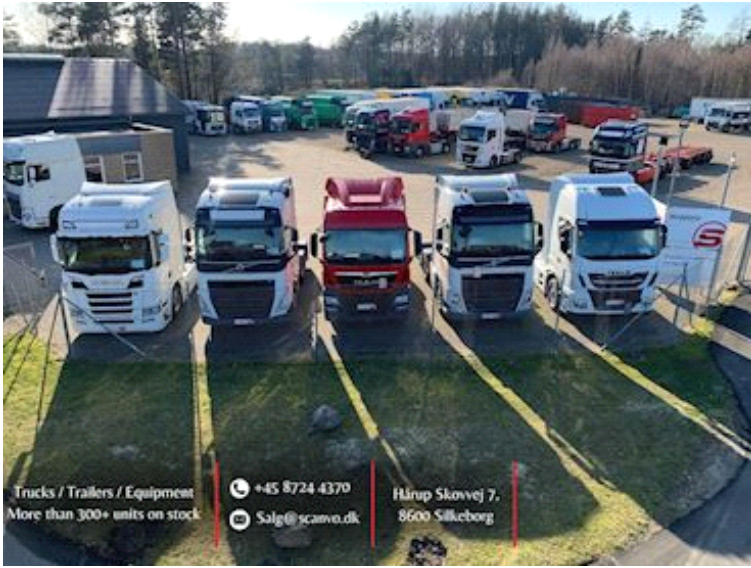
The tipper body is made of Hardox steel 5 mm bottom and 4 mm sides - HYVA tip piston
 internal dimensions approx. : L 12450 x H 2400 x W 2400 mm - volume approx. 72 m3 - tool box
 SAF axles - disc brakes - air suspension
 axle lift on 1st axle - self-tracking 4th axle

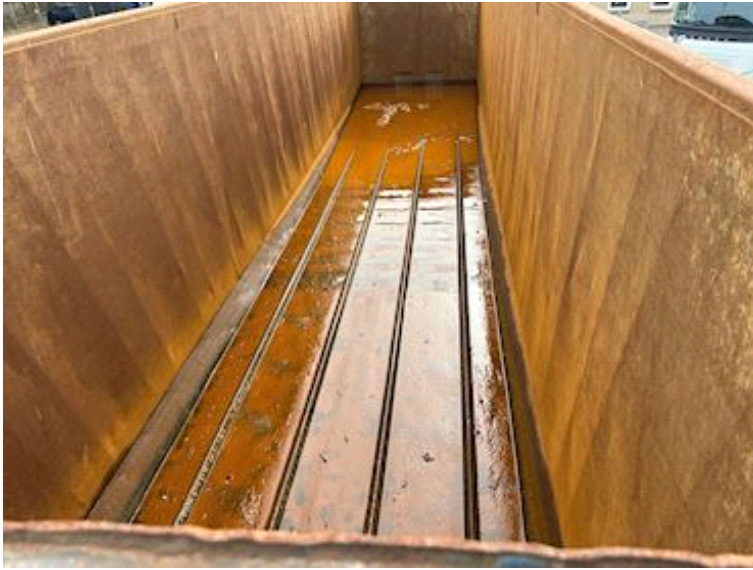
Red chassis that appears in good condition

Can be delivered with new inspection or last inspection 9/4-2025

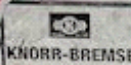
Contact us for more information at +45 872444370 or email scanvo.dk

See other great offers in transport equipment on our website www.scanvo.dk





Ges. Achslast: **4 - 9000 kg** techn. Achslast 4: **4 - 9000 kg**
T - 36000 kg Ges. Achslast: **T - 36000 kg**

		T35 722 Parts 43300	80 100 200 300 1.00
Type 4400	Service type 4400	K11 Top Curve 4 40 20 20 20 1217	4 40 20 20 20 1217
Brake calculation no. 0798501	0798501	Manufacture Kolding	Kolding
VIN 98T49943K622753	RSP Year 2008	98T49943K622753	98T49943K622753
0	000	4400	4400
Edge of wheel AC 4400	4400	4400	4400
Edge of wheel AC 20000	20000	20000	20000
Edge of wheel AC 1914	1914	1914	1914
Edge of wheel AC 00	00	00	00
Edge of wheel AC 10	10	10	10
4	4	4	4
0.2	0.2	0.2	0.2
0	0	0	0
0.75	1.0	4.5	8.5
0.38	0.6	1.2	1.7
1.5	4.2	8.2	8.2