

Scania R500 A 6x2/4 LB mega, Tractor



Scanvo Trucks Danmark A/S
 Hårup Skovvej 7, Hårup
 8600 Silkeborg

Sælger
 Salgsafdeling
 salg@scanvo.dk
 +45 8724 4370
 +45 3046 2148 / +45 2498 2148

Basis		Brakes		Cab	
Type	Tractor Unit	Disc brake	✓	Cab type	CR20 H
Aksel	6x2/4	ABS	✓	Number of sleeper berths	1
Stand	Very fine	Retarder	✓	Mirror camera	✓
Registration		Fahrhaus ausen		Radio	✓
Model year	2019	Warninglight	✓	Refrigerator	✓
Reg. date	17-01-2019	Color	Ivory White	Navigation	✓
Reg. no.	CE72788	Spoilers	✓	Coffee machine	✓
Latest inspection	10-02-2025	Fog lights	✓	Leather seats	✓
Chassis number (VIN)	YS2R6X20005524613	extra spotlights	✓	Lane-assistent	✓
Ref. no.	7928	Blitz lights	✓	Cab airheater	✓
Engine and transmission		LED front light	✓	Distance radar	✓
Hp	500	Chassis		Multifunction steering wheel	✓
Km	674500	Wheelbase mm	4100	Air in cabin for cleaning	✓
Gear box	GRS905R Opticruise aut shift	Axle load, front kg	7500	Air suspension cab	✓
EURO type	6	Axle load, rear kg	19000	Automatic air conditioning	✓
Number of tanks	1	Working light	✓	Automatic disaster Brake (FCW)	✓
Litre of tank	300 + 175	Liftable axles	2.	Leather seats	✓
Adblue litre of tank	80	Aluminium cover	✓	Tyres	
Without clutch pedal	✓	Steerable axle	✓	% remaining	80/80 - 80/60 - 40/40
Suspension		Compulsive shafts	2.	Dimensions	385/55R22,5 - 385/55R22,5 - 295/60R22,5
Front, air	✓	Radial bolster		Alpinsymbol 3PMSF - M+S	?
Rear, air	✓	Fixed	✓		
Weight		Height mm	1020		
Overall weight kg	26000				
Tare weight kg	8990				
King pin kg	17010				

Beskrivelse

Scania R500 A 6x2/4 LB mega / low factory built tractor

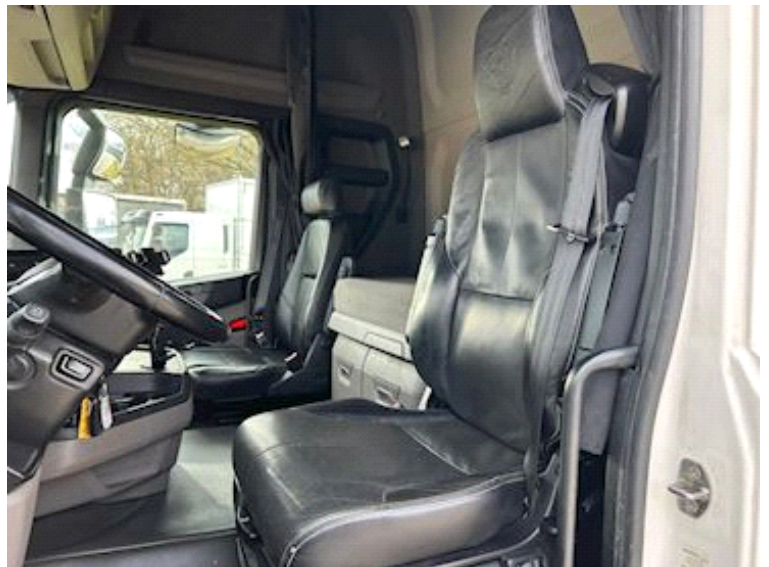
Fixed stool 130 mm high stool pt. driving height 1000mm can be raised in driving position by 20 mm or by installing a higher stool aluminum cover in front of stool - shut-off valves for air hoses - air gun for cleaning behind the cab
 2 pcs. LED in step boxes in front + 2 pcs. rear side spoiler and 2 pcs at the rear of the chassis - 24 volt power socket
 300 ltr. +175 ltr. diesel tanks - 80 ltr. AD blue tank

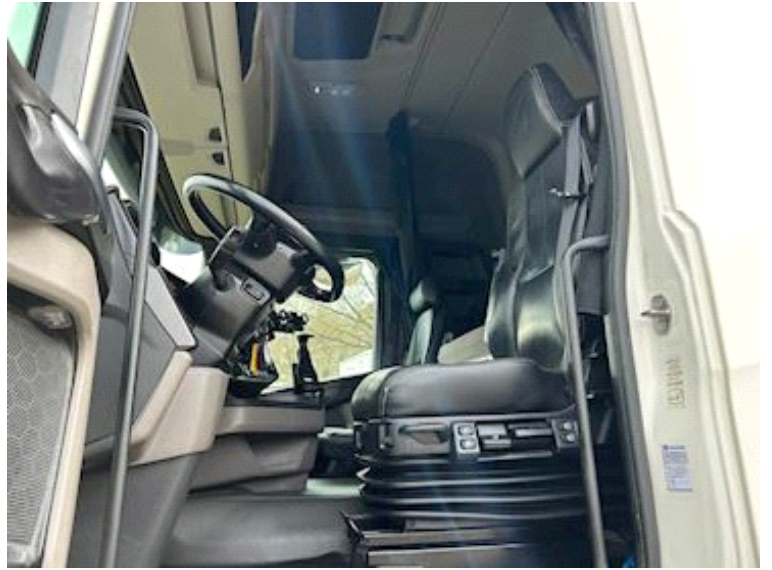
Euro 6 engine - Opticruise aut. gearshift - retarder - air suspension front + rear - lift + steerable middle axle

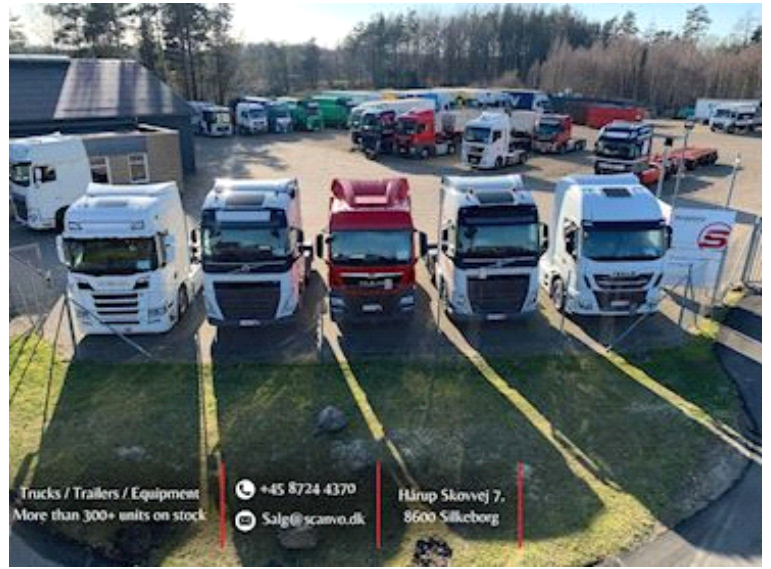
~~CR20 H Sleeper cab high roof - air on cab - 1 berth - air conditioning - leather seats - cabinets on rear wall - coffee machine in overhead cabinet - 3KW cabin heater - refrigerator - radio - extra high beams - fog lights - LED headlights - navigation - engine cover in light gray color - flash lights in front grille - rotating beacon on the roof -~~

Appears in very good condition - serviced by Scania - last service with oil change and filters performed at km 620,438 d 9/7-2025









Nye og brugte containere
 Mere end 100 enheder!

