

Hangler VTS-H 400 4 akslet - 2 delte ramper, Low loader



Scanvo Trucks Danmark A/S
 Hårup Skovvej 7, Hårup
 8600 Silkeborg

Sælger
 Salgsafdeling
 salg@scanvo.dk
 +45 8724 4370
 +45 3046 2148 / +45 2498 2148

Registration		Tyres		Weight	
Model year	2026	% remaining	100	Loading capacity kg	22260
Chassis number (VIN)	0024	Dimensions	235/75R17,5	Overall weight kg	30000
Ref. no.	7899	Brakes		Tare weight kg	7740
Brand new	✔	Drum brakes	✔	Total weight, low loader kg	44000
Basis		ABS	✔	Load capacity, low loader kg	36260
Type	Trailer	Coupling		Chassis	
Aksel	4	Brand	VBG 57 mm	Toolbox	✔
Stand	Brand new	Air-coupling	Duomatic	Total length mm	9950-10550mm
Suspension		Variable drawbar	ja	Shaft type	BPW
Air	✔	Coupling height mm	800	Axle load kg	11 + 11 + 11 + 11

Beskrivelse

New Hangler VTS-H 400 4-axle machine trailer - double ramps

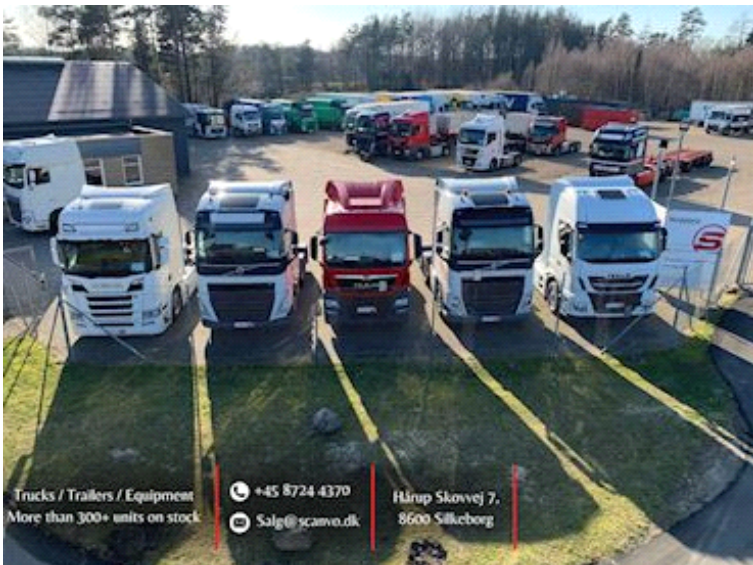
Total bed length 8250 mm bed length - 2000 + 850 mm on platform - 4600 mm flat section + 850 mm inclined section
 Fully galvanized chassis and ramps
 hydraulic galvanized ramps 2-part ramp L 2800mm + 800 mm - W 750mm - via the front vehicle's hydraulics, you can raise/lower and side shift the ramps, which are operated by handles on the side. Furthermore, the hydraulic system has a throttle valve installed so that the pressure can be adjusted manually
 (alternatively, when ordering, the trailer can also be delivered as a single full ramp and with a 24 volt power plug / hydraulic station instead)
 BPW 11 ton axles with drum brakes and air suspension with raise/lower function
 235/75R17.5 tires mounted with M+S approved pattern
 70 mm wooden planks in bottom, and grooved steel above the wheel arches - 2 x 5 pcs. stick holes in edge rail - 2 x 8 pcs. 10 ton lashing eyes in edge rail - 2 pcs. 5 ton at the front - low loading height of 900 mm - Extra 70mm for widening planks which are located in the middle recessed in the bottom of the flat
 Storage magazine for chains / straps built into rapo
 sliding drawbar with 57 mm towing eye, minimum coupling length 9950 mm can be increased by 600 mm
 stainless tool box
 LED 3 chamber rear lights
 4 pcs. extendable wide load signs with reflex planks and LED position lights to 3000 mm
 4 pcs. LED work lights (2 pcs. on the side + 2 pcs. at the back)
 Removable rotating beacon on one ramp

Approved for block truck driving 60 km/h: 44,000 kg / load 36,260 kg - at 90 km/h: 30,000 kg / load 22,260 kg

Reservations for printing and typing errors - ready for delivery end of September 2025

We always have a wide selection of new and used units - Call for more information about delivery time can also be delivered as a single complete ramp - - Contact us today at +45 8724 4370 to hear more!

As a dealer of products from the Austrian manufacturer Hangler, which for many years has produced strong strong trailer products for some of the toughest tasks. The product range ranges widely - from machine, low-mounted, heavy-duty or curtain trailers, trailers, etc. You will receive a well-equipped product for the tough tasks that are often performed in the Scandinavian and Nordic countries.



Trucks / Trailers / Equipment
More than 300+ units on stock

+45 8724 4370
Salg@scanvo.dk

Hårup Skovvej 7,
8600 Silkeborg

