



Various Komlet hydraulik kit til kran opbygning, Hydraulic installation



Scanvo Trucks Danmark A/S
Hårup Skovvej 7, Hårup
8600 Silkeborg

Sælger
Salgsafdeling
salg@scanvo.dk
+45 8724 4370
+45 3046 2148 / +45 2498 2148

Basis		Registration	
Type	Spare parts	Ref. no.	7704-2
Aksel			
Stand	Very fine		

Beskrivelse

Complete hydraulic kit with tank power take-off

Previously used for MAN TGS with AS Tronic gearbox which has been used on this crane / flatbed construction consisting of:
hydraulic steel tank from BEVOLA with return filter and 2 support rings of approx. 115 ltr tank with supports D 600 x H 570 x Width 350 mm

VBG power plug for power to crane and 3 pcs. oil outlets with oil couplings and oil hoses and pressure valve

Associated pump S2675 (see photos)

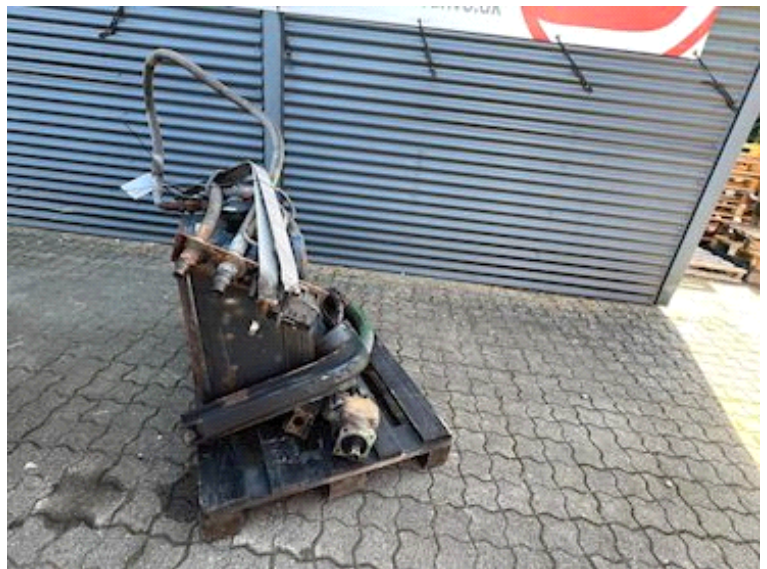
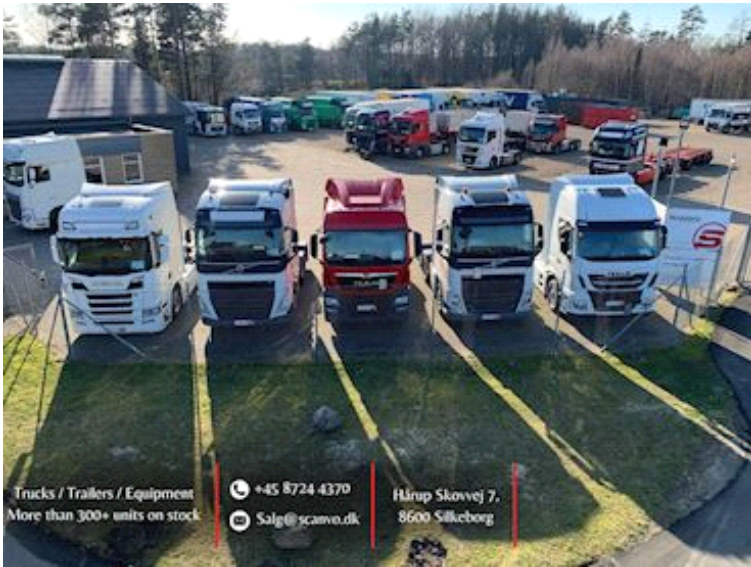
Gearbox power take-off from TGS approx. 4 years old

Option for purchasing

Swap body for attaching a smaller crane (previously Fassi F150A.23 crane)

Total length 7670 mm including body Installation dimensions 1150 mm + body length 6500 mm 1000 mm alu. sides with cheek grip posts - 5850 mm distance between container locks - regular condition for age and has had a new flatbed a few years ago

Contact Scanvo Trucks +45 87244370 - email salg@scanvo.dk See other cranes and accessories at www.scanvo.dk - Always more than 300 units on stock





SCANVO
TRUCKS DANMARK A/S

