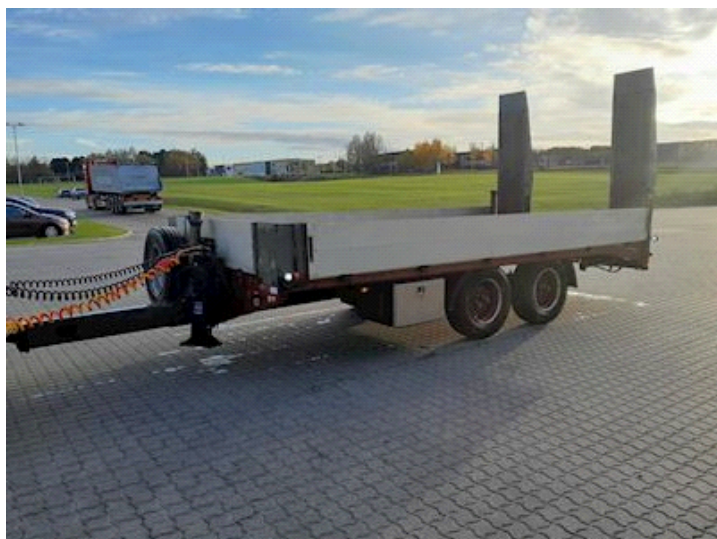


MTDK KC200 11,8 ton 5,2 mtr lad + ramper, Low loader



Scanvo Trucks Danmark A/S
Hårup Skovvej 7, Hårup
8600 Silkeborg

Sælger
Salgsafdeling
salg@scanvo.dk
+45 8724 4370
+45 3046 2148 / +45 2498 2148

Registration	
Model year	2017
Reg. date	24-08-2017
Reg. no.	CE5977
Latest inspection	17-10-2025
Chassis number (VIN)	UMTP211MT7AMT4231
Ref. no.	7857

Basis	
Type	Drawbar
Aksel	2
Stand	Very fine

Tyres	
% remaining	80 - 80
Dimensions	235/75 R17,5
Alpinsymbol 3PMSF - M+S	?

Dimensions	
Internal height mm	400
Internal width mm	2430 / 2480
Internal length mm	5200

Auto transport	
Platform length	5200

Brakes	
Drum brakes	✓

Weight	
Loading capacity kg	9180
Overall weight kg	11800
Tare weight kg	2620
King pin kg	800

Coupling	
Electrical coupling	2x7-polet
Air-coupling	Duo-matic
Manufacturer	57mm
V "KN air"	26
V "KN no air"	34
Coupling height mm	650-800

Suspension	
Parabolic	✓
Chassis	
Wheelbase mm	995
Axle load, rear kg	5500 + 5500 = 11000
Toolbox	✓
Wheelbase to 1. axel mm	4108
Total length mm	7100
Working light	✓
Shaft type	BPW
Truck body / box	
Bottom	Ståldørk
Boards	✓
Foldable lashing rings	✓

Beskrivelse

New Hanger TPS-H 140, 2-axle cart for machine transport

Total weight 14,400 kg Low net weight and new optimized payload of approx. 10,000 kg
 Let length incl. hinge 6,200 mm - 5300 mm on plan piece + hinge 900 mm - Iron dry shed bottom - Removable 400 mm alu. pages
 2 x 6 pcs. Collapsible 3 ton lashing rings in bed edge - Loading height 850 mm -
 Manual spring-actuated ramps L 2300 x W 510 mm in galvanized steel, covered with wooden planks with strong gas spring, for
 operation by 1 person, can be moved laterally manually
 Adjustable coupling height from 650 to 900 mm with 57 mm draw eye - The coupling length is approx. 8150 mm
 SAF axles - drum brakes - raising/lowering valve for air suspension
 205/65R17.5 twin mounted tire M+S approved
 2 pcs. stop globes in magazine holder + Support legs in the back to relieve the chassis when loading
 1 piece. tool box mounted under the bed
 LED tail lights - 2 pcs LED tail lights and 2 pcs. sling lights
 Supplied in RAL 3002 fireplace red finish lacquer
 For new orders, it can be delivered in a RAL color of your choice

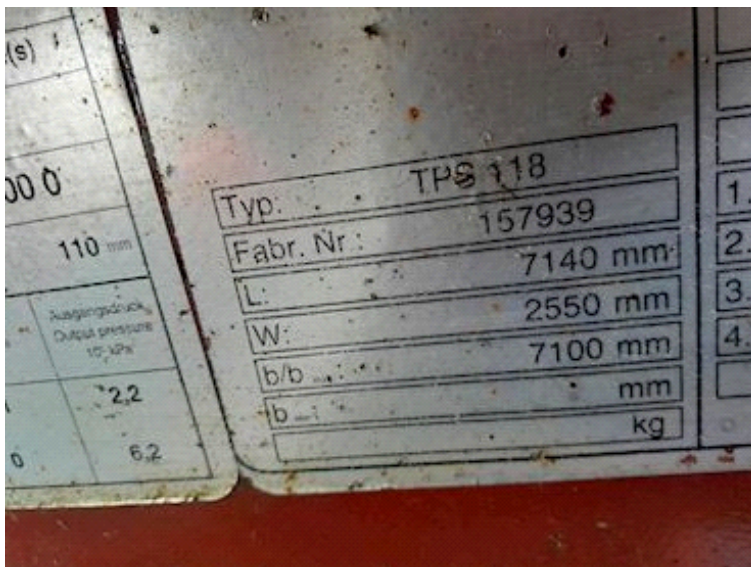
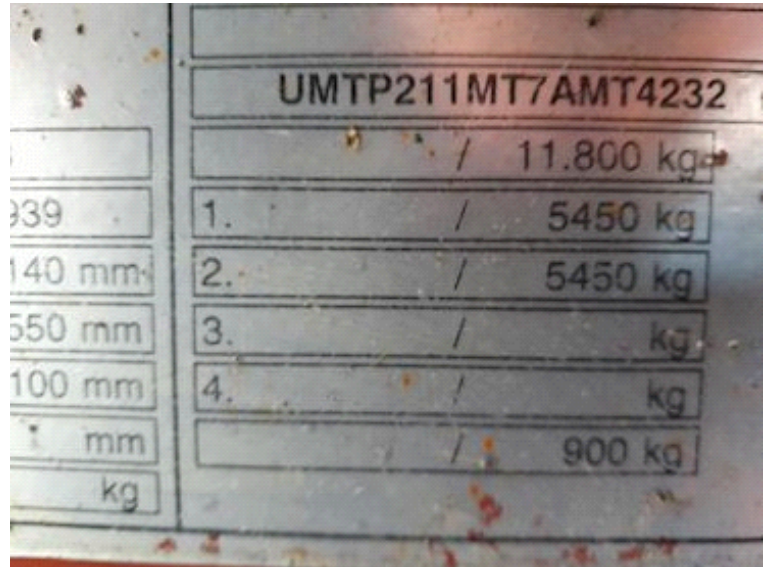
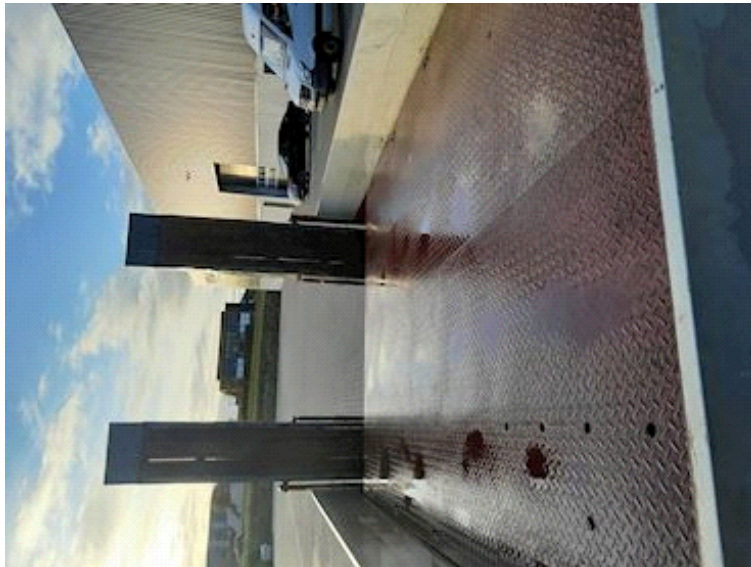
We can also offer the same cart with black undercarriage from stock

Call for more info can be delivered in other designs with a larger total/payload

See our large selection of new and used machine trailers and trailers on our website www.scanvo.dk

As a retailer of products from the Austrian manufacturer Hanger, which for many years has produced powerful, strong trailer products for some of the toughest tasks. The product range is wide ranging - from machine, built-in, heavy load or curtain trailers, carts, etc. with this you receive a well-equipped product for the tough tasks that are often carried out in the Scandinavian and Nordic countries.

- AN OFFER YOU CAN'T REFUSE



Nye og brugte containere
Mere end 100 enheder!

