

Scancon S6215, open



Scanvo Trucks Danmark A/S
Hårup Skovvej 7, Hårup
8600 Silkeborg

Sælger
Salgsafdeling
salg@scanvo.dk
+45 8724 4370
+45 3046 2148 / +45 2498 2148

Basis		Registration		Container	
Type	Containers	Model year	Fabriksny	Side rolls	✓
Aksel		Chassis number (VIN)	S6215-4271	Side-hinged rear doors	✓
Stand	Brand new	Ref. no.	4271	Hoist	
Weight		Brand new	✓	Hook lift	✓
Tare weight kg	Ca. 1960 kg			Wire	✓

Beskrivelse

Brand new Scancon Strong-Liner model S6215

interior approx. dimensions: length 6200 mm - width 2350 mm - height 1000 mm - external total length 6500mm - 15m3 room content

5 mm. bottom and 3 mm. sides in S235 steel

Hook and wire

Side-hung rear doors

750 mm. in beam distance - strong lashing rod long outside

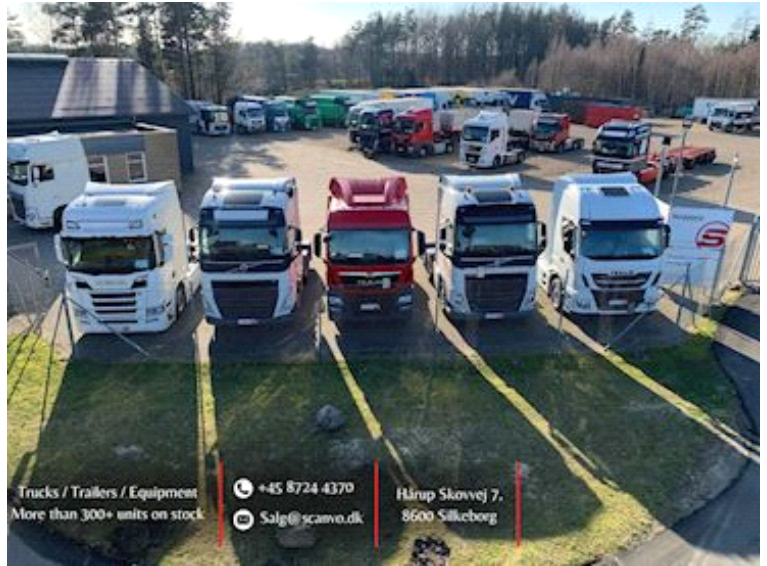
Step on the front end

The container is sandblasted before it is painted in RAL 7021 Schwarzgrau - Can be delivered in any RAL color when ordering

We continuously have new containers in the pipeline in all models / sizes, contact us +45 87244370 or email salg@scanvo.dk

View new containers at www.scanconcontainers.dk or click on www.scanvo.dk here you will find more than 100 new and used containers.

Nye og brugte containere
Mere end 100 enheder!





SCANVO
TRUCKS DANMARK A/S

