

Scancon S6017, open



Scanvo Trucks Denmark A/S
Hårup Skovvej 7, Hårup
8600 Silkeborg

Sælger
Salgsafdeling
salg@scanvo.dk
+45 8724 4370
+45 3046 2148 / +45 2498 2148

Basis	
Type	Containers
Aksel	
Stand	Brand new
Weight	
Tare weight kg	2240

Registration	
Model year	Fabriksny
Chassis number (VIN)	S6017-4063
Ref. no.	4063
Brand new	✓

Container	
Side rolls	✓
Side-hinged rear doors	✓
Stop mm	5770
Dimensions	
External length mm	6350
Internal height mm	1250
Internal width mm	2350
Internal length mm	6000
Cubic meters	17

Beskrivelse

Scancon Strong-Liner model S6017

internal dimensions: 6000 x H 1250 x W 2350 mm - volume 17m3

Manufactured with 5 mm. bottom and 3 mm in sides - pull-up for hook and wire hoist

750 mm. in side distance - strong lashing rod long outside - steps on the front bulkhead + inside in the box - Side-hung rear doors

Painted in RAL 3001 signal red - when ordering we can deliver in any RAL color at no extra cost

We have many new container boxes in stock or on the way home in several sizes and designs also in Hardox steel!

14 m3, 15 m3, 17 m3, 18 m3, 21 m3, 22 m3, 24 m3, 25 m3, 28 m3, 29 m3!

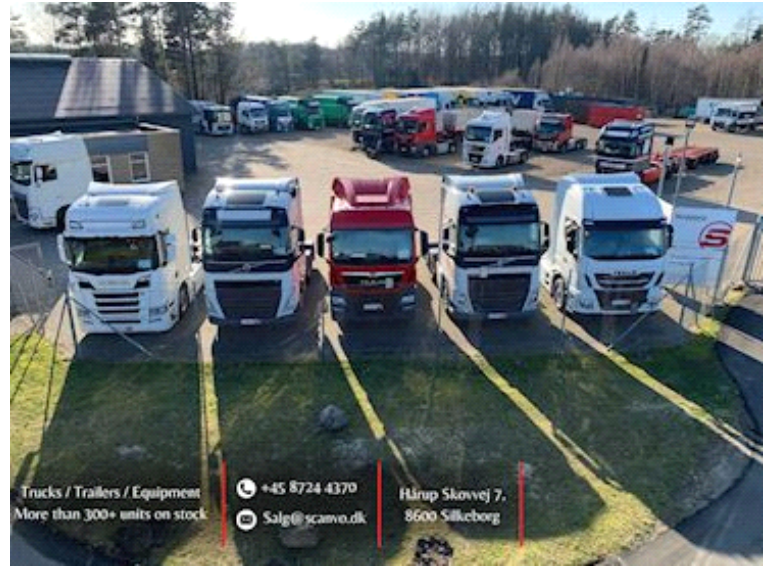
Call us today at +45 8724 4370 and find out more about what's coming! We can also deliver according to special requests!

See our catalog with new: www.scanconcontainers.dk or stock list with new and used containers: <https://www.scanvo.dk/lagerliste?iconid=78>





Nye og brugte containere
Mere end 100 enheder!



Trucks / Trailers / Equipment
More than 300+ units on stock

+45 8724 4370
Salg@scanvo.dk

Hårup Skovvej 7,
8600 Silkeborg