

Scancon SH6515 Hardox 15m3 6500mm, open



Scanvo Trucks Danmark A/S
Hårup Skovvej 7, Hårup
8600 Silkeborg

Sælger
Salgsafdeling
salg@scanvo.dk
+45 8724 4370
+45 3046 2148 / +45 2498 2148

| Basis | | Registration | |
|-------|------------|----------------------|-------------|
| Type | Containers | Model year | Fabriksny |
| Aksel | n/a | Chassis number (VIN) | SH6515-xxxx |
| Stand | Brand new | Brand new | ✓ |

Beskrivelse

Brand new Scancon SH6515 Hardox 15 m3 container

Built with the following internal dimensions: L 6500 mm (6400 mm ex. top-hung tailgate) X W 2370 mm X H 1000 mm - ext. length: 6600 mm - volume 15 m3

4 mm HARDOX 450 bottom / 3 mm HARDOX 450 sides - Lifting tower for hook and wire hoist - Ladder on front bulkhead - Side rollers

Air-controlled automatic rear bulkhead 400 mm (Plunger on left side of long beam) + Side/top-hung rear bulkhead - Full-height rear bulkhead

Sandblasted and painted in RAL 7021 (Black-gray) - can also be delivered in other colors and dimensions from stock, otherwise it can be ordered in any RAL color

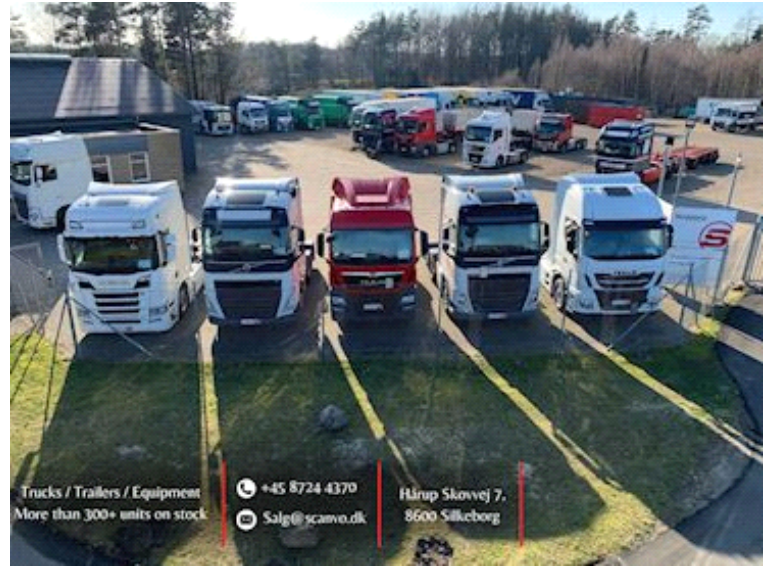
The container is "HARDOX IN MY BODY" - certified by SSAB

If interested, contact us at +45 8724 4370 / salg@scanvo.dk or see our selection of other containers and units at www.scanvo.dk





Nye og brugte containere
Mere end 100 enheder!



Trucks / Trailers / Equipment
More than 300+ units on stock

+45 8724 4370
Salg@scanvo.dk

Hårup Skovvej 7,
8600 Silkeborg