

Various 20 fod skibs container, Container



Scanvo Trucks Danmark A/S
 Hårup Skovvej 7, Hårup
 8600 Silkeborg

Sælger
 Salgsafdeling
 salg@scanvo.dk
 +45 8724 4370
 +45 3046 2148 / +45 2498 2148

Basis		Registration	
Type	Various	Model year	2025
Aksel		Reg. date	03-01-2025
Stand	As new	Chassis number (VIN)	GVTU 260462-0
Weight		Ref. no.	4188
Tare weight kg	2040		

Beskrivelse

20 foot shipping container in standard design

RAL 9005 black (Tiefschwarz)

- Theft-proof locking clothes on rear doors
- Plywood bottom
- Ventilation holes in the sides at the top of the box
- Lashing eyes in the edge at the bottom of the flat bed
- 5850 mm center between container locks
- Fork pockets - so it can be quickly lifted off at the construction site

Interior flat bed dimensions: L 5870 x H 2400 x W 2335 mm - clear dimensions 2290 mm - exterior approx. dimensions: L 6060 x H 2590 x W 2438 mm

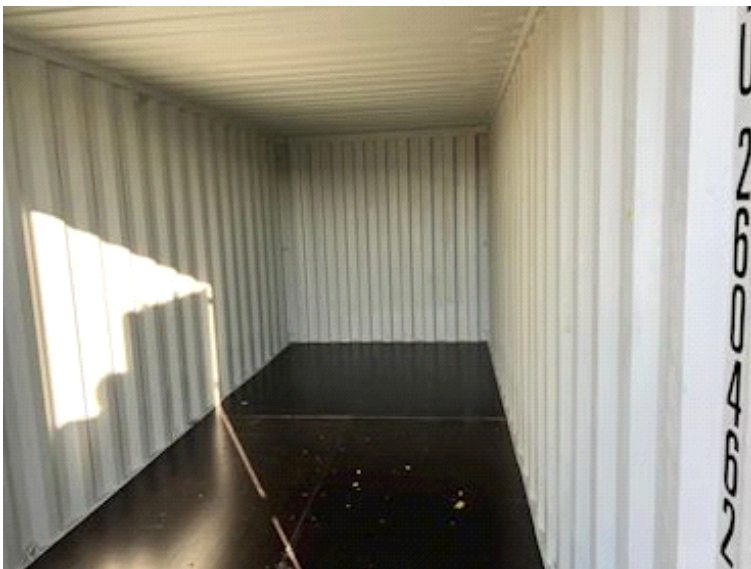
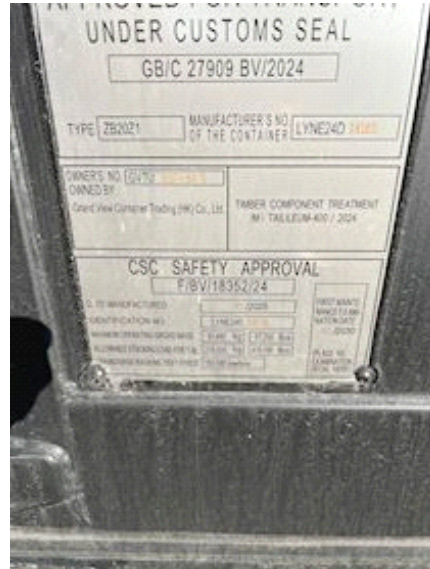
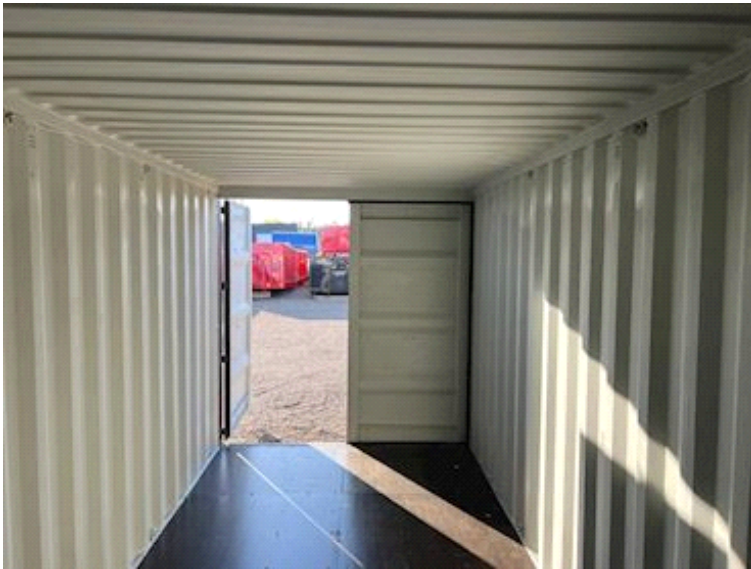
Floor area 13.8 m² - net weight approx. 2040 kg

This container appears as new!

Possibility of purchasing Scancon model CR6000 20 foot hoist container frame hoist for hook and wire hoist
 Should the transport be combined with other goods? can we offer Scancon machine sheds with ramps with built-in container locks

Contact us by phone +45 87244370 or by email salg@scanvo.dk

Visit our website www.scanconcontainers.dk or www.scanvo.dk - Always a large selection of new and used containers





SPECIFICATION DECAL

ITEM	DIMENSION	
	Metre	English
External		
Length	6,050 mm 19 ft 10 1/2 in (238 1/2")	
Width	2,435 mm 8 ft 0 in (8' 0")	
Height	2,591 mm 8 ft 6 in (8' 6")	
Internal (minimum)		
Length	5,050 mm 16 ft 7 in (16' 7")	
Width	2,352 mm 7 ft 9 in (7' 9")	
Height	2,303 mm 7 ft 7 in (7' 7")	
Door Opening (minimum)		
Width	2,340 mm 7 ft 8 in (7' 8")	
Height	2,289 mm 7 ft 6 in (7' 6")	
Cubic Capacity		
	33.2 Cu.m.	1,179 Cu.ft.
Tare Wt.	2,840 kg	6,260 lb.
Max. Payload	25,440 kg	56,200 lb.
Max. G.W.	28,280 kg	62,300 lb.



