

MAN TGX 18-440 4x2 LLS-U mega, Tractor



Scanvo Trucks Danmark A/S
Hårup Skovvej 7, Hårup
8600 Silkeborg

Sælger
Salgsafdeling
salg@scanvo.dk
+45 8724 4370
+45 3046 2148 / +45 2498 2148

Basis	
Type	Tractor Unit
Aksel	4x2
Stand	Used
Registration	
Model year	2008
Reg. date	30-06-2008
Reg. no.	XS92275
Latest inspection	27-01-2024
Chassis number (VIN)	WMA13XZZ28W117807

Engine and transmission	
Engine	damage engine
Hp	440
Km	928000
Gear box	AS tronic aut shift
EURO type	4
Number of tanks	1
Rear axle, single interchange	✓
Fahrhaus ausen	
Color	White

Suspension	
Front, air	✓
Rear, air	✓
Brakes	
Disc brake	✓
ABS	✓
Cab	
Cab type	XXL cab
Number of sleeper berths	2
Automatic air conditioning	✓

Beskrivelse

Defective engine model D2066 LF36 (324 kW) Euro 4

Suitable for spare parts - almost new tires

MAN TGX 18-440 4x2 LLS-U mega tractor

XXL cab - full air suspension

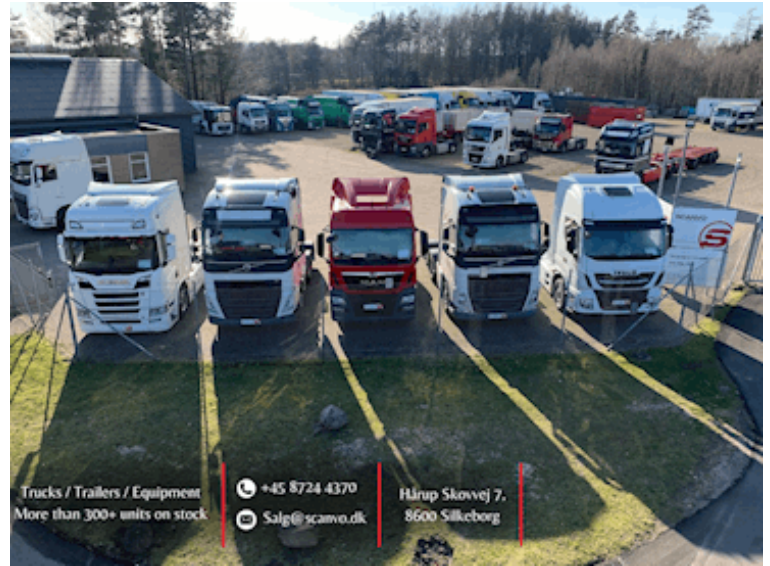
Has been used as a TMA - therefore the stool has been removed

Sold as is and is available - buyer must be responsible for pickup and loading is in Støvring city code 9530

Contact +45 24982148 - or email remi@scanvo.dk

See other vehicles at www.scanvo.dk

Nye og brugte containere
Mere end 100 enheder!



Trucks / Trailers / Equipment
More than 300+ units on stock

+45 8724 4370
Salg@scanvo.dk

Hårup Skovvej 7,
8600 Silkeborg

