

Mercedes-Benz Econic 2630L ENA 4 kammer NTM, Refuse collection



SCANVO
TRUCKS DANMARK A/S



Scanvo Trucks Danmark A/S
Hårup Skovvej 7, Hårup
8600 Silkeborg

Sælger
Salgsafdeling
salg@scanvo.dk
+45 8724 4370
+45 3046 2148 / +45 2498 2148

| Basis | |
|--------------------------|----------------------|
| Type | Truck |
| Aksel | 6x2*4 |
| Stand | Very fine |
| Registration | |
| Model year | 2020 |
| Reg. date | 11-09-2020 |
| Reg. no. | CU93782 |
| Chassis number (VIN) | W1T9560331V263520 |
| Ref. no. | 7712 |
| Engine and transmission | |
| Engine | OM936 6 cyl. 7.7 ltr |
| Hp | 300 |
| Km | 76000 |
| Gear box | MB Powershift 3 |
| EURO type | 6 |
| Number of tanks | 1 |
| Litre of tank | 200 |
| Rear axle, hub reduction | ✓ |
| Ad-blue | ✓ |
| PTO engine | ✓ |
| Adblue litre of tank | 25 |
| Service contract | ✓ |
| Dimensions | |
| External height mm | 3600 |
| External width mm | 2550 |
| External length mm | 9750 |

| Cab | |
|--------------------------------|-----------------------|
| Cab type | Low entry cab. |
| Air-conditioning | ✓ |
| Mirror camera | ✓ |
| Rear-view camera | ✓ |
| Engine cab heater | ✓ |
| Lane-assistent | ✓ |
| Number of seats | 3 |
| Cruise control | ✓ |
| Load Indicator | ✓ |
| Multifunction steering wheel | ✓ |
| Air in cabin for cleaning | ✓ |
| Regen-Sensor | ✓ |
| Automatic disaster Brake (FCW) | ✓ |
| Fahrhaus ausen | |
| Warninglight | ✓ |
| Color | Signal Red 2 |
| additional worklights | ✓ |
| Blitz lights | ✓ |
| Tyres | |
| % remaining | 80/80 - 80/70 - 50/90 |
| Dimensions | 315/70xR22,5 |
| Suspension | |
| Front, air | ✓ |
| Rear, air | ✓ |

| Chassis | |
|---------------------------------|-------------------------------|
| Wheelbase mm | 3900 |
| Axle load, front kg | 8000 |
| Axle load, rear kg | 19000 |
| Toolbox | ✓ |
| Working light | ✓ |
| Hydraulically steered rear axle | ✓ |
| Shaft type | Axel ratio 3.909 |
| Brakes | |
| Disc brake | ✓ |
| ABS | ✓ |
| Engine brake | High Performance Engine Brake |
| Weight | |
| Loading capacity kg | 8920 |
| Overall weight kg | 26000 |
| Tare weight kg | 17080 |
| Compactor | |
| M3 | 9,5 + 4,8 + 4,0 + 1,9 |
| municipal waste | ✓ |
| Make | NTM |
| Type | Quattro |
| Chassis no. | 24373 |
| Model year | 2020 |
| 2 chambers | ✓ |

Beskrivelse

Pictures is from similar truck.

Mercedes Econic 2630 L ENA 6x2*4 refuse truck - Diesel engine

NTM Quattro 4 chamber system with the following divisions 9.5 + 4.8 + 4.0 + 1.9 - can also be used as a 2 chamber system
The compactor box is radiocontrolled and made as Hybrid / Epto and has approx. 4 hours of operation on electricity, after which it can be run on the vehicle's regular hydraulics.
Battery pack 22kHh from Banke model B01605 serial number SN10221

tool / magazine box under construction - SKF central lubrication of the NTM recycling plant

Lots of work lights / Flashing lights facing backwards as well as rotating beacons and light signs on the roof and rear of the recycling plant

200 ltr diesel tank - 25 ltr AD Blue tank - 3900 mm axle distance - air suspension front + rear - hydraulically steerable rear axle

AN OFFER YOU CAN'T REFUSE

Day cab low entry - 2 passenger seats - air conditioning - Large 360 degree camera package with: reverse, front, and camera on the right and left side - FCW aut emergency braking against collision - reversing alarm - lane departure warning - Color RAL 3001 signal red 2

Appears in very good condition and regularly serviced by Mercedes according to display

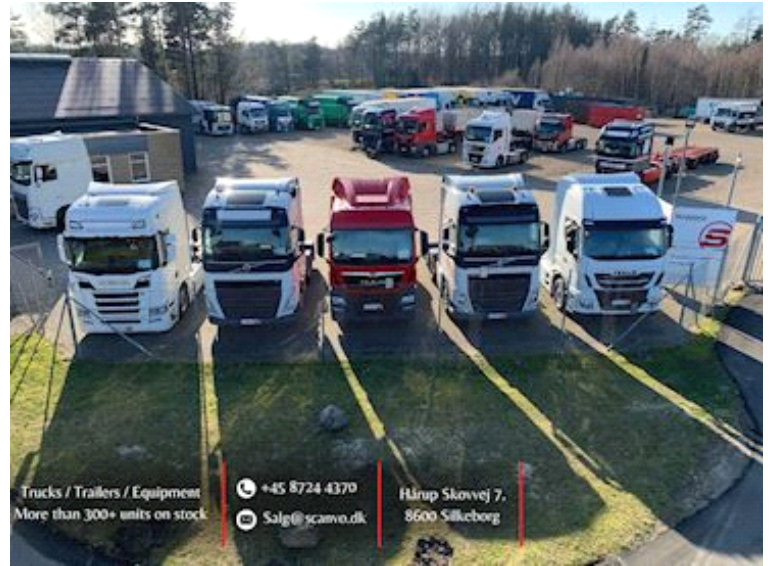
Contact Scanvo Trucks +45 87244370 - or email salg@scanvo.dk

See other refuse trucks on our website www.scanvo.dk + 300 other units



SCANVO
TRUCKS DANMARK A/S

Nye og brugte containere
Mere end 100 enheder!



Trucks / Trailers / Equipment
More than 300+ units on stock

+45 8724 4370
Salg@scanvo.dk

Hårup Skovvej 7,
8600 Silkeborg

