

Mercedes-Benz Antos 2533 L, Closed box



Scanvo Trucks Danmark A/S
Hårup Skovvej 7, Hårup
8600 Silkeborg

Sælger
Salgsafdeling
salg@scanvo.dk
+45 8724 4370
+45 3046 2148 / +45 2498 2148

Basis		Cab		Dimensions	
Type	Truck	Cab type	Stream Space 2,3	External height mm	3670
Aksel	6x2*4	Air-conditioning	✓	External width mm	2550
Stand	Very fine	Number of sleeper berths	hvillebriks	External length mm	12000
Registration		Equipment kit	Safety pakke	Internal height mm	2290
Model year	2017	Radio	✓	Internal width mm	2500
Reg. date	12-09-2017	Lane-assistent	✓	Internal length mm	9800
Reg. no.	DW70725	Inverter 24V-220V	✓	Load highness at back mm	2250
Latest inspection	31-08-2023	Multifunction steering wheel	✓	Light inside box	✓
Chassis number (VIN)	WDB96302010178387	Automatic disaster Brake (FCW)	✓	Cubic meters	56
Ref. no.	7634	Chassis		Truck bed height mm	1250
Engine and transmission		Wheelbase mm	6100	Weight	
Hp	330	Axle load, front kg	8000	Loading capacity kg	13325
Km	591000	Axle load, rear kg	19000	Overall weight kg	26000
Gear box	aut power shift	Working light	✓	Tare weight kg	12675
EURO type	6	Steerable axle	✓	Truck body / box	
Number of tanks	1	Tyres		Bottom	alu profil
Litre of tank	500	% remaining	40 - 10 - 30	Box type	Alu kasse
Rear axle, single interchange	✓	Dimensions		Make	Schmitz
Adblue litre of tank	80	385/65R22,5 - 315/70R22,5 - 315/70R22,5		Lashing rails on the sides	✓
Without clutch pedal	✓	Brakes		Serial no.	9009415
Fahrhaus ausen		Disc brake	✓	Model year	8/2017
Color	White	ABS	✓	Lift	
Xenon Lights	✓	Engine brake	✓	Lift kg	2500
extra spotlights	✓	Suspension		Make	BÄR
roof spoiler	✓	Front, air	✓	Top shutter	✓
Blitz lights	✓	Rear, air	✓	Radio remote controle	✓
				Hight at platform mm	2000
				Model year	2017
				Model	BC 2500 S4

Beskrivelse

Mercedes-Benz Antos 2533 L 6x2*4 - year 2017

Schmitz 24 pallets alu. box model MKO no 9009413 internal dimensions: L 9800 x W 2460 x H 2290 mm - bed base height 1250 mm - external total height 3670 mm - aluminum profile bottom - top flap - light in box - 1 row of lashing rail

2500kg BÄR lift with radio control - 2000 mm aluminum lift plate

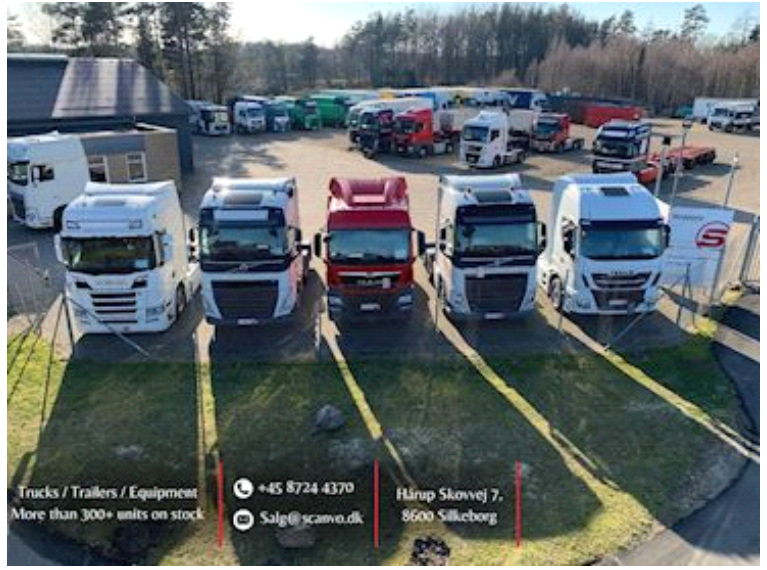
Classic Space 2.3 cab with Safty package - air conditioning - roof spoiler - Cruise control - Lane assist + Catastrophe brake - Powershift Aut. gear shift - Air suspension front + rear - hydraulic steering + liftable bogie which makes the truck more manoeuvrable

Well maintained 1 owner company car - can be delivered with or without preparation

- AN OFFER YOU CAN'T REFUSE

If interested, contact us on +45 8724 4370 / salg@scanvo.dk or see our selection of distribution vehicles at www.scanvo.dk

Nye og brugte containere
 Mere end 100 enheder!



Trucks / Trailers / Equipment
 More than 300+ units on stock

+45 8724 4370
 Salg@scanvo.dk

Hårup Skovvej 7,
 8600 Silkeborg







