

# Mitsubitsi Fuso CANTER 9C150, Haken



Scanvo Trucks Danmark A/S  
Hårup Skovvej 7, Hårup  
8600 Silkeborg

Sælger  
Salgsafdeling  
salg@scanvo.dk  
+45 8724 4370  
+45 3046 2148 / +45 2498 2148

Basis		Cab		Brakes	
Type	Truck	Cab type	dag cab	Disc brake	✓
Aksel	4x2	Air-conditioning	✓	ABS	✓
Stand	Fine	Mirror camera	✓	Suspension	
Registration		Rear-view camera	✓	Front, conventional	✓
Model year	2017	Radio	✓	Rear, air	✓
Reg. date	19-07-2017	Walkie	✓	Dimensions	
Reg. no.	AW81858	Number of seats	2 mands passagersæde	External height mm	2550 ved top af krogårn
Latest inspection	17-07-2023	Fahrhaus ausen		External width mm	2150
Chassis number (VIN)	TYBFECX1GLDY11375	Stickers	✓	External length mm	6150
Ref. no.	7586	Color	Blå + sølv metallic	Truck bed height mm	940
Engine and transmission		additional worklights	✓	Weight	
Engine	4 cyl.. 3,0	Blitz lights	✓	Loading capacity kg	4250
Hp	150	Chassis		Overall weight kg	8550
Km	224000	Wheelbase mm	3850	Tare weight kg	4300
Gear box	Aut shift	Axle load, front kg	3100	Total weight, low loader kg	12050
EURO type	6	Axle load, rear kg	6000	Hook lift	
Number of tanks	1	Toolbox	✓	Make	Hiab
Litre of tank	xxxx	Closed sides	✓	Type	XR8S4150 H-I-N med udv. låse
Ad-blue	✓	Working light	✓	Load capacity	8
PTO gearbox	✓	Tyres		Serial number	X85415070236252
Adblue litre of tank	20	% remaining	80 - 70	Model year	2017
Without clutch pedal	✓	Dimensions	205/75R17,5	Removable hook	✓
		Tippers		Max container measure mm	5600
		Rear tipper	✓	Last inspection	28/12-2023

## Beskrivelse

Mitsubishi Fuso Canter 9C15 Duonic Euro 6

HIAB 8 ton hook lift model XRS4150 - hook tower height 1450 mm - external container locks - length from hook tower to rear bumper 4400 mm = 5100 mm container length, when using a hydraulic extension bumper + 500 mm, it is possible to drive with a container length of approx. 5600 mm - top edge container roll height = 940 mm - tool boxes on the left side - max total height 2300 mm and length 6150 mm - short axle distance so that it can get in where the others give up!

Spec: axle distance 3850 - Aut gearbox - air-suspended rear axle - 2 man passenger seat

Equipment such as: Flash boom - flash light - 2 x pcs. extra work light - reverse + cyclist camera - air-sprung rear axle

Regularly serviced at Mercedes

- AN OFFER YOU CAN'T REFUSE

The car has the possibility of approval for a 3500 kg ball coupling, but is NOT fitted!

Contact Scanvo +45 87244370 - email salg@scanvo.dk

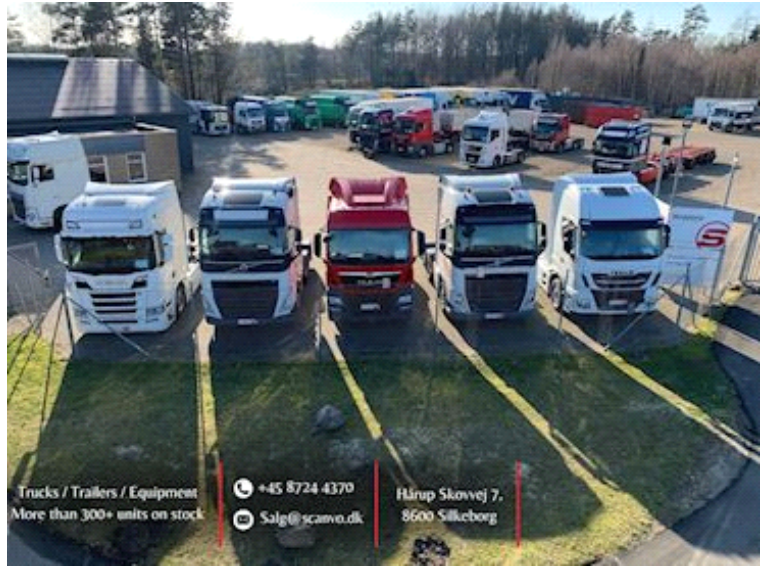
See more exciting topics on our website [www.scanvo.dk](http://www.scanvo.dk)



---

- AN OFFER YOU CAN'T REFUSE

Nye og brugte containere  
Mere end 100 enheder!



Trucks / Trailers / Equipment  
More than 300+ units on stock

+45 8724 4370

Salg@scavo.dk

Hårup Skovvej 7,  
8600 Silkeborg

