

Mercedes-Benz Antos 2533 L, Closed box



Scanvo Trucks Danmark A/S
Hårup Skovvej 7, Hårup
8600 Silkeborg

Sælger
Salgsafdeling
salg@scanvo.dk
+45 8724 4370
+45 3046 2148 / +45 2498 2148

Basis		Cab		Dimensions	
Type	Truck	Cab type	Stream Space 2,3	External height mm	3670
Aksel	6x2*4	Air-conditioning	✓	External width mm	2550
Stand	Very fine	Number of sleeper berths	hvilebriks	External length mm	12000
Registration		Equipment kit	Safety pakke	Internal height mm	2290
Model year	2017	Radio	✓	Internal width mm	2500
Reg. date	12-09-2017	Lane-assistent	✓	Internal length mm	9800
Latest inspection	26-11-2024	Inverter 24V-220V	✓	Load highness at back mm	2250
Chassis number (VIN)	WDB96302010176788	Multifunction steering wheel	✓	Light inside box	✓
Ref. no.	7602	Automatic disaster Brake (FCW)	✓	Cubic meters	56
Engine and transmission		Chassis		Truck bed height mm	1250
Hp	330	Wheelbase mm	6100	Weight	
Km	533000	Axle load, front kg	8000	Loading capacity kg	13325
Gear box	aut power shift	Axle load, rear kg	19000	Overall weight kg	26000
EURO type	6	Working light	✓	Tare weight kg	12675
Number of tanks	1	Steerable axle	✓	Truck body / box	
Litre of tank	500	Tyres		Bottom	alu profil
Rear axle, single interchange	✓	% remaining	10 - 10 - 40	Box type	Alu kasse
Adblue litre of tank	80	Dimensions	385/65R22,5 - 315/70R22,5 - 315/70R22,5	Make	Schmitz
Without clutch pedal	✓	Brakes		Lashing rails on the sides	✓
Fahrhaus ausen		Disc brake	✓	Serial no.	9009413
Color	White	ABS	✓	Model year	8/2017
Xenon Lights	✓	Engine brake	✓	Lift	
extra spotlights	✓	Suspension		Lift kg	2500
roof spoiler	✓	Front, air	✓	Make	BÄR
Blitz lights	✓	Rear, air	✓	Top shutter	✓
				Radio remote controle	✓
				Hight at platform mm	2000
				Model year	2017
				Model	BC2500S4
				Serie no.	17047012304

Beskrivelse

Mercedes-Benz Antos 2533 L 6x2*4 - year 2017

Schmitz 24 pallets alu. box model MKO no 9009413 internal dimensions: L 9800 x W 2460 x H 2290 mm - bed base height 1250 mm - external total height 3670 mm - aluminum profile bottom - top flap - light in box - 1 row of lashing rail

2500kg BÄR lift with radio control - 2000 mm aluminum lift plate

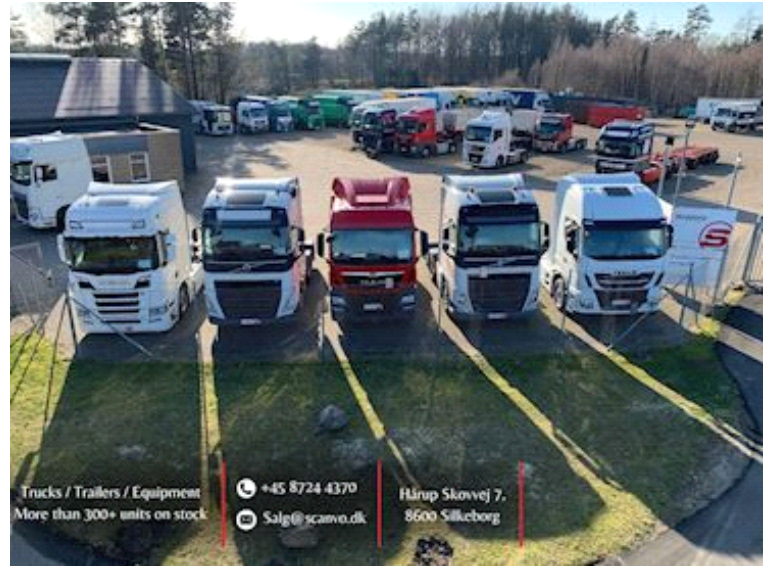
Classic Space 2.3 cab with Safty package - air conditioning - roof spoiler - Cruise control - Lane assist + Catastrophe brake - Powershift Aut. gear shift - Air suspension front + rear - hydraulic steering + liftable bogie which makes the truck more manoeuvrable

Well maintained 1 owner company car - can be delivered with or without preparation

- AN OFFER YOU CAN'T REFUSE

If interested, contact us on +45 8724 4370 / salg@scanvo.dk or see our selection of distribution vehicles at www.scanvo.dk

Nye og brugte containere
Mere end 100 enheder!



Trucks / Trailers / Equipment
More than 300+ units on stock

+45 8724 4370

Salg@scanvo.dk

Hårup Skovvej 7,
8600 Silkeborg





