

Langendorf 36 m3 4 akslet SKA 36 alu tiptrailer, Tipper



Scanvo Trucks Danmark A/S
 Hårup Skovvej 7, Hårup
 8600 Silkeborg

Sælger
 Salgsafdeling
 salg@scanvo.dk
 +45 8724 4370
 +45 3046 2148 / +45 2498 2148

Basis		Chassis		Weight	
Type	Semi-Trailer	Wheelbase to 1. axel mm	5310	Loading capacity kg	39520
Aksel	4	Self-tracking axle	✓	Overall weight kg	48000
Stand	Very fine	Shaft type	BPW	Tare weight kg	8480
Suspension		Liftable axles	1. + 4.	King pin kg	18000
Air	✓	Registration		Dimensions	
Brakes		Model year	2020	Cubic meters	36
Drum brakes	✓	Reg. date	28-02-2020	Doors	
ABS	✓	Reg. no.	FS3032	Automatic tailgate	✓
Tyres		Latest inspection	10-07-2024	Truck body / box	
% remaining	90/90 - 60/90 - 80/80 - 60/50	Chassis number (VIN)	WLASKA448KWF68400	Bottom	alu + blå plastindlæg
Dimensions	385/65R22,5	Ref. no.	7562	Tent	
		Tippers		Automatic tarpaulin	✓
		Rear tipper	✓		

Beskrivelse

Langendorf 4 axle tip trailer capacity 36m3 model SKA 36

Blue plastic insert which is extra strong wear resistance mounted inside the box + approx. 1000 mm up the sides which is in good condition

ECO-top aut tarpaulin
 tool box

BPW axles with drum brakes and air suspension - axle lift on 1 + 4th axle - self-tracking 4th axle

Wabco smart board for, among other things axle load reading operation of raising/lowering function - extra LED reversing lights

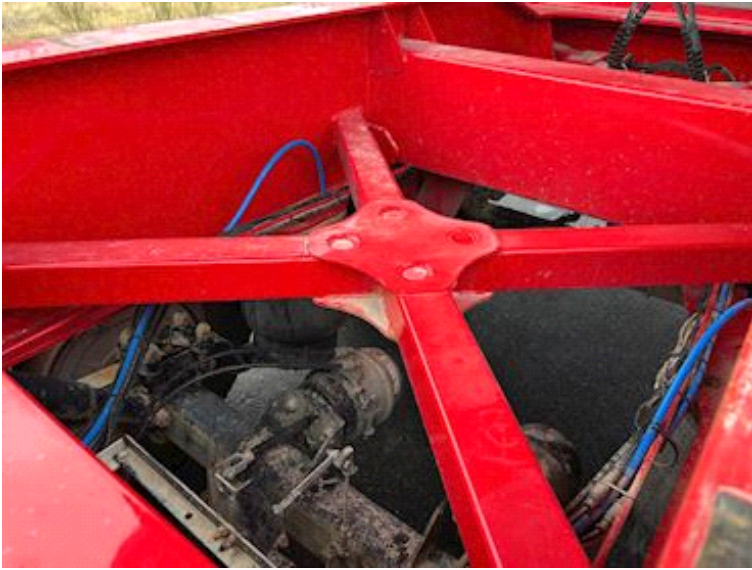
Post red chassis - Silver box which was newly painted in 2025 - delivered with inspection from 7/2024 very good condition on plastic in flatbed and sides

Appears in very good condition - and is a good alternative to a new tip trailer

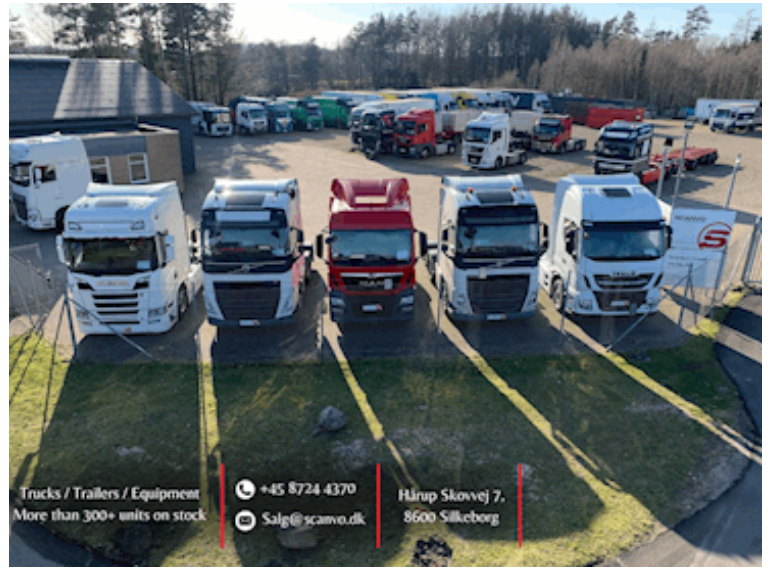
Contact us for more information at +45 872444370 or email scanvo.dk

See other great offers in transport equipment on our website www.scanvo.dk









Nye og brugte containere
Mere end 100 enheder!

