

Hangler SVS-H 620 T 4 akslet galvaniseret, Low loader



Scanvo Trucks Denmark A/S
Hårup Skovvej 7, Hårup
8600 Silkeborg

Sælger
Salgsafdeling
salg@scanvo.dk
+45 8724 4370
+45 3046 2148 / +45 2498 2148

Basis	
Type	Semi-Trailer
Aksel	4
Stand	Brand new
Suspension	
Air	✓
Brakes	
Drum brakes	✓
ABS	✓
Auto transport	
Platform length	13300 mm
Tyres	
% remaining	100
Dimensions	235/75R17,5"
Coupling	
Coupling height mm	1200

Chassis	
Toolbox	✓
Total length mm	12200 eller 11900
Self-tracking axle	✓
Shaft type	SAF
Liftable axles	1. aksel
Axle load kg	7.5+7.5+7.5+7.5
Stool height mm	1200mm
Registration	
Model year	2025
Chassis number (VIN)	0011
Ref. no.	7376
Brand new	✓
Truck body / box	
Bottom	stål+træ
Holes for Sockets	✓
Foldable lashing rings	✓

Low loader	
Outriggers with planks	✓
Hydraulic ramps	✓
Wide load signs	✓
Weight	
Loading capacity kg	37640
Overall weight kg	48000
Tare weight kg	10360
King pin kg	18000
Total weight, low loader kg	60800
Load capacity, low loader kg	50440
Dimensions	
External width mm	2550
Length mm	13300
Truck bed height mm	900

Beskrivelse

NEW HANGLER SVS-H 620 T 4-axle machine trailer with double hydraulic ramps, the chassis is FULLY GALVANIZED!

Strong machine trailer made of steel frame and base + 70 mm strong wooden planks.

Kingbolt can be placed in 2 positions

Total length 13300 mm - 4000 mm on rapo - length of built-in part 9200 mm incl. slope at the back

Barn floor covered with 70 mm wooden planks + expansion planks are stored in the middle of the barn floor

2-part ramps - length 2800 + 800 mm = total length 3,600 mm width 750 mm + associated 2 pcs. short steel ramps for access to rapo

Electric hydraulic pump station mounted in toolbox for controlling ramps via 24 volt power NATO plug in front

Magazine well down built in rapo for storing chain or other

4 pcs. 5 tons of lashing eyes on repo

2 x 11 pcs. 10 tons of lashing eyes distributed along the edge rails

2 x 8 pcs. walking sticks holes

SAF axles - drum brakes - air suspension - raising/lowering valves

Automatic axle lift on 1st axle

Co-steering 3rd + 4th axle is automatically locked when reversing, can be engaged via the rear light on the tractor

235/75 R17.5 tire mounting M + S approved tires

Retractable wide load signs with reflective planks and LED position lights up to 3000 mm

Removable rotor light on one ramp

LED 3-chamber lights

4 pcs. LED work lights (2 pcs. on the side + 2 pcs. at the back)

Subject to typing and printing errors

Contact us for more information on 87244370 or send us an email salg@scanvo.dk

- AN OFFER YOU CAN'T REFUSE

See more machine trailers on our website www.scanvo.dk

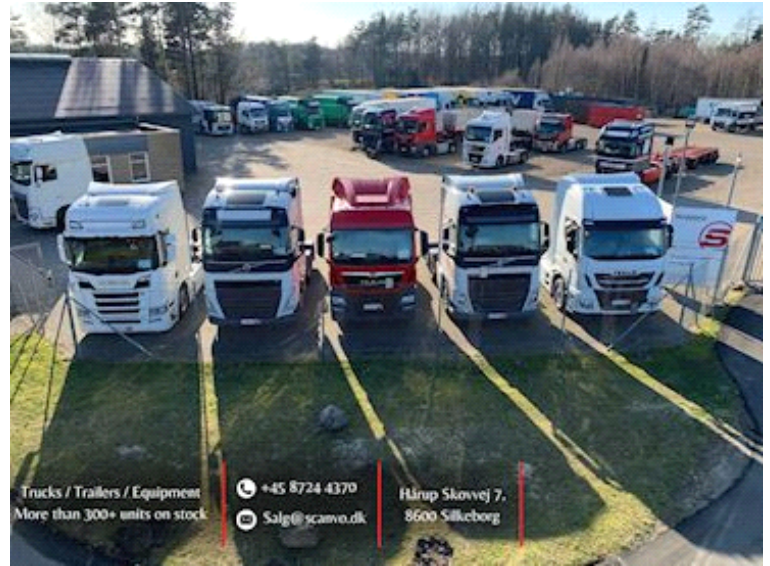
As a retailer of products from the Austrian manufacturer Hangler, which for many years has produced powerful, strong trailer products

for some of the toughest tasks. The product range is wide ranging - from machine, built-in, heavy load or curtain trailers, carts, etc. with this you receive a well-equipped product for the tough tasks that are often carried out in the Scandinavian and Nordic countries.



SCANVO
TRUCKS DANMARK A/S

Nye og brugte containere
Mere end 100 enheder!



Trucks / Trailers / Equipment
More than 300+ units on stock

+45 8724 4370
Salg@scanvo.dk

Hårup Skovvej 7,
8600 Silkeborg



