

Scania P320 DB 6x2*4 MNA - Dobbelt compartment, Fridge



Scanvo Trucks Danmark A/S
Hårup Skovvej 7, Hårup
8600 Silkeborg

Sælger
Salgsafdeling
salg@scanvo.dk
+45 8724 4370
+45 3046 2148 / +45 2498 2148

Basis	
Type	Truck
Aksel	6x2*4
Stand	Very fine
Registration	
Model year	2017
Reg. date	21-08-2017
Reg. no.	DL53714
Latest inspection	30-09-2024
Chassis number (VIN)	YS2P6X20005476227
Ref. no.	7650
Engine and transmission	
Engine	DC09 133 L01
Hp	320
Km	363000
Gear box	GR875 optiruse aut shift
EURO type	6
Number of tanks	1
Litre of tank	400
Rear axle, single interchange	✓
Adblue litre of tank	80
Without clutch pedal	✓
Tyres	
% remaining	10 - 80 - 80
Dimensions	315/70R22,5

Cab	
Cab type	CP14 day cab
Rear-view camera	✓
Radio	✓
Navigation	✓
Cab airheater	✓
Air suspension cab	✓
Automatic air conditioning	✓
Fahrhaus ausen	
Warninglight	✓
Color	White RAL 9001 int80034
roof spoiler	✓
Chassis	
Wheelbase mm	5700
Axle load, front kg	8000
Axle load, rear kg	19000
Hydraulically steered rear axle	✓
Brakes	
Disc brake	✓
ABS	✓
Suspension	
Front, parable	✓
Rear, air	✓
Doors	
Side doors, right	✓

Dimensions	
Internal height mm	2300
Internal width mm	2500
Internal length mm	9850
Load highness at back mm	2200
Light inside box	✓
Weight	
Loading capacity kg	12430
Overall weight kg	26000
Tare weight kg	13570
Refrigeration	
Double compartment	✓
Hours, diesel	6752
Refrigerator, year model	2017
Electric connection	✓
Type	Supra 1250 MT
Coolbox brand	Wilke
Truck body / box	
Bottom	glasfiber
Lift	
Lift kg	2500
Make	BÅR
Top shutter	✓
Radio remote controle	✓
Hight at platform mm	2250

Beskrivelse

Scania P320 DB 6x2*4 MNA - year 2017 - Well maintained 1 owner company car -

Fiberglass cooling box from Wilke in Germany with the following internal dimensions: L 9850 x W 2500 x H 2300 mm (light dimension in the back frame 2200 mm) - light dimension under the cooling evaporator in the back 2150 mm alu - 2200 mm under the dividing walls - profile bottom - light in the box partition wall and fold-down doors from the roof so that you can drive with the differences in temperature in the box - plastic sliding curtains in the back that keep the temperature in the box

Carrier Supra 1250 MT double compartment refrigerator - diesel + 380 volt electric operation total operating hours 6905 of which 6752 engine hours - service performed 6/11-2024 v/ 5700 hours

BÅR lift BC 2500 kg 4S - large lift plate + radio control

Equipped with: CP14 day cab with low entry - air conditioning - navigation - cabin heater - roof spoiler - Cruise control - Lane assist + Emergency brake - Euro 6 - Opticruise aut. gear - parabolic suspension front + air rear - hydraulically steerable bogie

Appears in nice and regular condition - service with oil change + filters v/ 333.681 km d 4/6-2024 - brakes / clutch wear according to

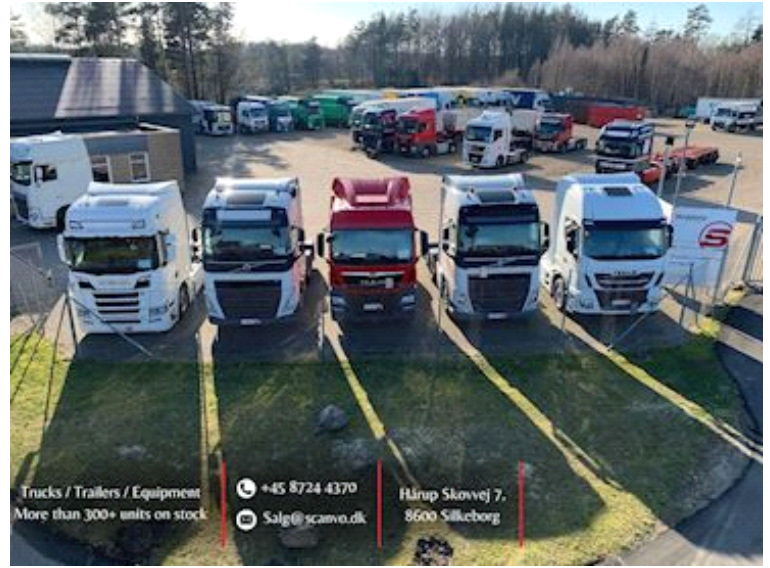
- AN OFFER YOU CAN'T REFUSE

for display

If interested, contact us on +45 8724 4370 / salg@scanvo.dk or see our selection of distribution vehicles at www.scanvo.dk



Nye og brugte containere
Mere end 100 enheder!



Trucks / Trailers / Equipment
More than 300+ units on stock

+45 8724 4370
Salg@scanvo.dk

Hårup Skovvej 7,
8600 Silkeborg

