

Leci 13,6 mtr. box læsserampe, Box Trailer



Scanvo Trucks Danmark A/S
Hårup Skovvej 7, Hårup
8600 Silkeborg

Sælger
Salgsafdeling
salg@scanvo.dk
+45 8724 4370
+45 3046 2148 / +45 2498 2148

Basis	
Type	Semi-Trailer
Aksel	2
Stand	Used
Suspension	
Air	✓
Brakes	
Drum brakes	✓
ABS	✓
Chassis	
Axle load, rear kg	18000
Toolbox	✓
Wheelbase to 1. axel mm	7470
Shaft type	BPW

Tyres	
% remaining	80 - 80
Dimensions	265/70R19,5
Registration	
Model year	2011
Reg. date	26-04-2011
Chassis number (VIN)	VV1E2EBJGGN146492
Ref. no.	7280
Weight	
Loading capacity kg	21560
Overall weight kg	31000
Tare weight kg	9440
King pin kg	13000

Dimensions	
Internal height mm	2910
Internal width mm	2470
Internal length mm	13600
Light inside box	✓
Cubic meters	97
Truck bed height mm	900
Truck body / box	
Bottom	træ/stål profiler + jern dørk
Box type	Plywood sider
Load highness mm	900
Back doors	✓
Lift	
Ramp	✓
Fully covering	✓
Hight at platform mm	2900
Model year	2011
Battery station	✓

Beskrivelse

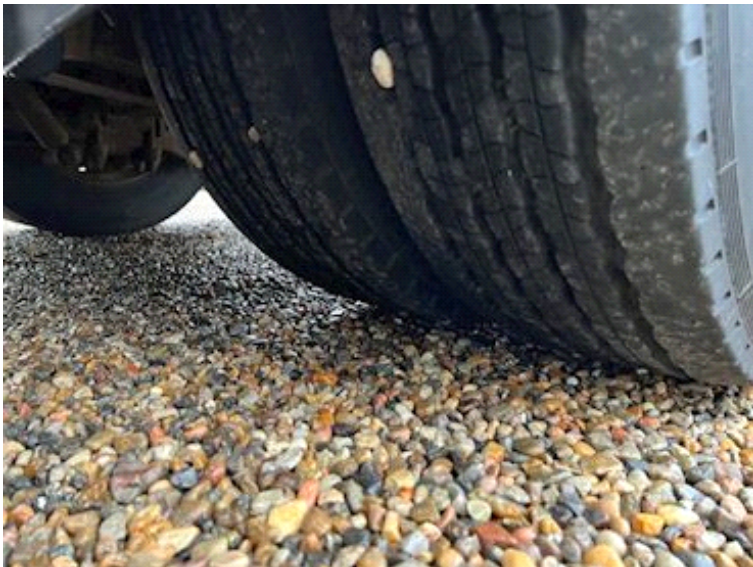
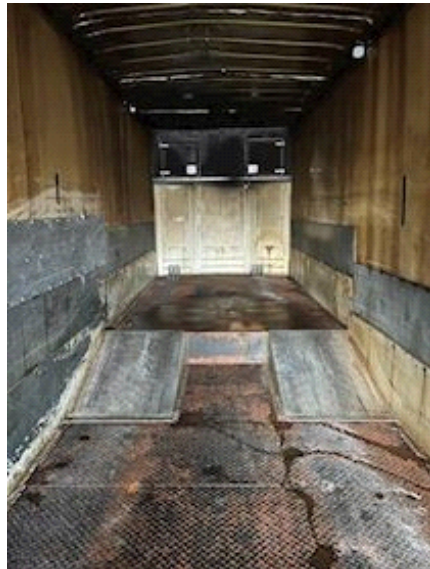
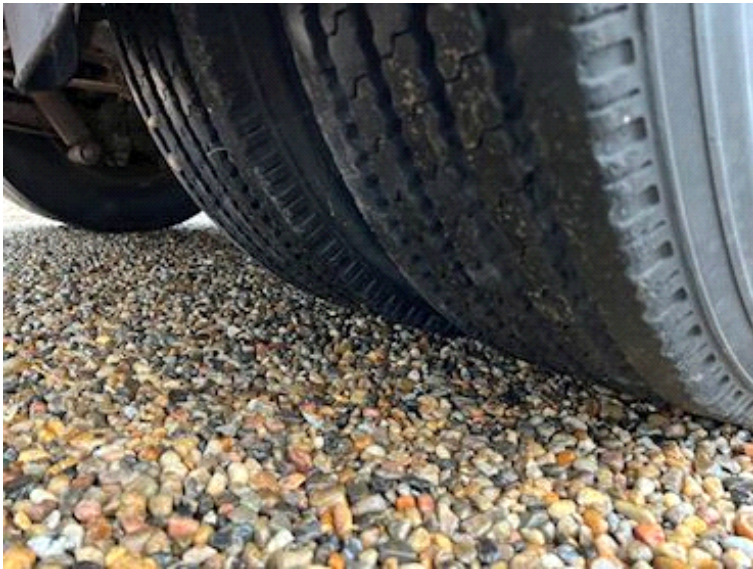
Leci 2 axle 13.6 mtr. low-rise box trailer with large loading ramp

The box has a slanted corner on the front and thus the length is increased by 250 mm in the middle - internal bed dimensions: L 13600 x H 2900 x W 2470 mm - rapo L = 3900 mm + steel ramps down to a flat bed bed L 9700 = mm - bed bed height 900 mm electrically operated large galvanized loading ramp = L 2900 x W 2500 mm - wood with steel profiles + iron door on top - steel roof - internal light - on the front wall inside there is an upper manufactured storage compartment with doors - the box sides are made of plywood and mounted on a strong steel frame approx. 600 mm above the bottom of the bed - the side of the bed to the left of the door is rep outside - battery station - tool box - BPW axles - air suspension - drum brakes - load capacity 21,560 kg
Contact Scanvo Trucks +45 87244370 - email: salg@scanvo.dk
Visit our website www.scanvo.dk - Always more than 300 units in stock





SCANVO
TRUCKS DANMARK A/S



- AN OFFER YOU CAN'T REFUSE