

Volvo FM460 Pusher, Tractor



Scanvo Trucks Danmark A/S
Hårup Skovvej 7, Hårup
8600 Silkeborg

Sælger
Salgsafdeling
salg@scanvo.dk
+45 8724 4370
+45 3046 2148 / +45 2498 2148

Basis	
Type	Tractor Unit
Aksel	6x2/2
Stand	Very fine

Registration	
Model year	2020
Reg. date	25-02-2020
Reg. no.	CL37751
Latest inspection	20-03-2023
Chassis number (VIN)	YV2XZY0C6LA859093
Ref. no.	7374

Engine and transmission	
Engine	11 Ltr.
Hp	460
Km	550000
Gear box	I-shift aut
EURO type	6
Number of tanks	1
Litre of tank	550
Rear axle, single interchange	✓
Ad-blue	✓
Adblue litre of tank	50
Without clutch pedal	✓

Suspension	
Front, parable	✓
Rear, air	✓

Brakes	
Disc brake	✓
ABS	✓
Engine brake	✓

Fahrhaus ausen	
Color	RAL 5012 Blue
Spoilers	✓
Fog lights	✓
additional worklights	✓
Bi-Xenon Dipped beam	✓
Bi-Xenon main beam	✓

Chassis	
Wheelbase mm	4100
Axle load, front kg	8000
Axle load, rear kg	19000
Toolbox	✓
Gear box cooler	✓
Liftable axles	2.
Aluminium cover	✓

Weight	
Overall weight kg	26000
Tare weight kg	8800

Cab	
Cab type	Globetrotter
Number of sleeper berths	1
Engine cab heater	✓
Equipment kit	Komfort+
Radio	✓
Refrigerator	✓
Navigation	✓
Lane-assistent	✓
Digital tachograph	✓
Distance radar	✓
Cruise control	✓
Load Indicator	✓
Multifunction steering wheel	✓
Air suspension cab	✓
Automatic air conditioning	✓
Automatic disaster Brake (FCW)	✓
Electric windows	✓

Tyres	
% remaining	50/50 - 60/60 - 30/30
Dimensions	385/55R22,5 - 315/70R22,5 - 315/70R22,5
Radial bolster	
Make	Jost
Fixed	✓
Height mm	1150

Beskrivelse

Volvo FM460 6x2 Pusher tractor unit (Euro 6)

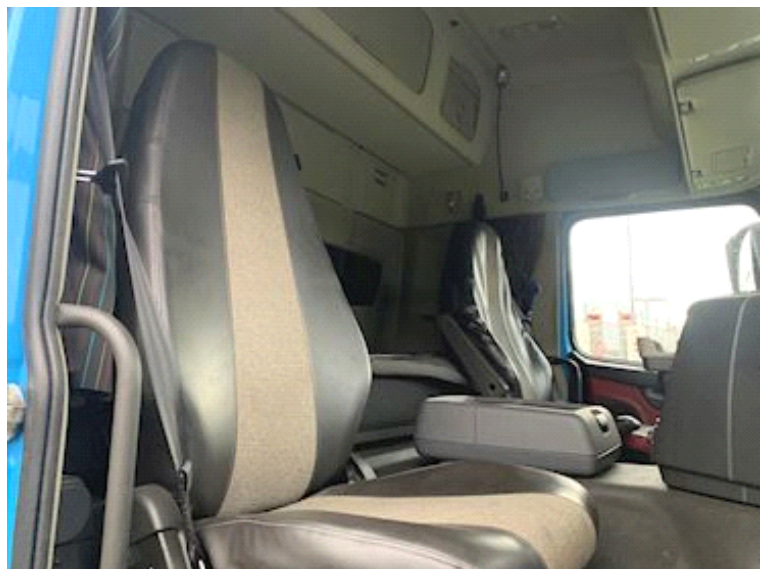
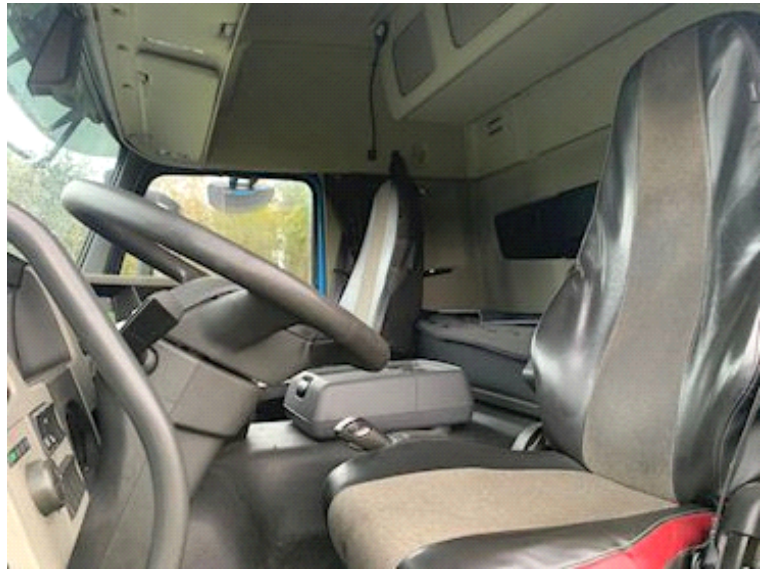
4100mm wheelbase - Parabolic suspension front, Air suspension rear - Toolbox - Aluminum cover over chassis - 550 Liter fuel tank - 50 liter ad-blue tank - Fixed JOST stool - Nato 24V plug.

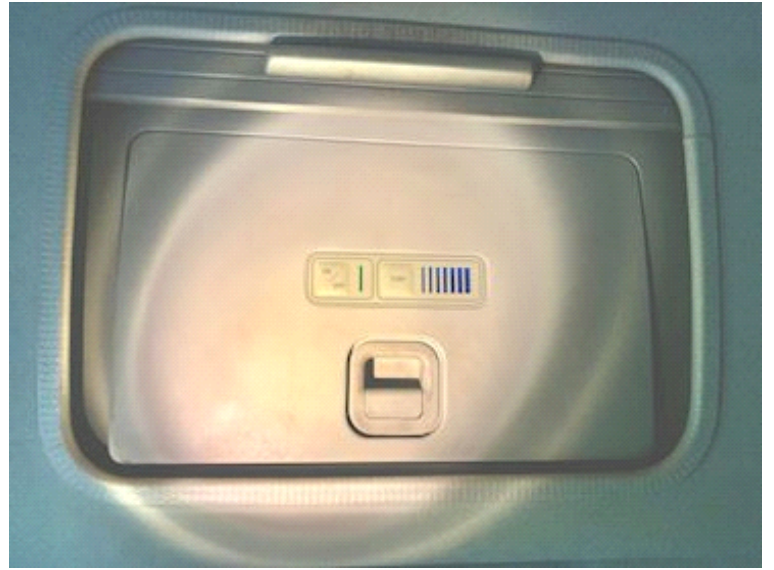
Globetrotter cab with low entry - Spoiler set - Light box - Fog lights - Bi-Xenon low/high beam - Extra work light on rear wall - RAL 5012 blue cab colour.

Sleeper cabin with 1 berth - Engine / Cabin heater - Comfort+ equipment package - 28-liter refrigerator on the back wall of the cab - Navigation - Cruise control - Load indicator - Air-suspended cab - Automatic air conditioning system.

Contact Scanvo for more info +45 87244370 - salg@scanvo.dk







Nye og brugte containere
Mere end 100 enheder!

