

DAF XF480 FAS 6x2, Closed box



Scanvo Trucks Danmark A/S
Hårup Skovvej 7, Hårup
8600 Silkeborg

Sælger
Salgsafdeling
salg@scanvo.dk
+45 8724 4370
+45 3046 2148 / +45 2498 2148

Basis

Type	Truck
Aksel	6x2
Stand	Brand new

Registration

Model year	2023
Reg. date	03-09-2023
Chassis number (VIN)	XLRASF5300G420178
Ref. no.	7339

Engine and transmission

Engine	MX-13
Hp	480
Km	1000
Gear box	TraXon 12 aut shift
EURO type	6
Number of tanks	1
Litre of tank	620
Rear axle, single interchange	✓
Ad-blue	✓
Adblue litre of tank	45
Without clutch pedal	✓

Fahrhaus ausen

Color	W9815White
extra spotlights	✓
LED front light	✓

Cab

Cab type	XF sleepercab
Number of sleeper berths	2
Engine cab heater	✓
Radio	✓
Distance radar	✓
Automatic disaster Brake (FCW)	✓

Chassis

Wheelbase mm	4800
Axle load, front kg	8000
Axle load, rear kg	19000
Closed sides	✓
Total length mm	9600
Working light	✓

Tyres

% remaining	100
Dimensions	315/70R22,5

Brakes

Disc brake	✓
ABS	✓
Engine brake	MX

Suspension

Front, air	✓
Rear, air	✓

Lift

Lift kg	2000
Make	Dhollandia
Hight at platform mm	1750
Model year	2023
Model	DHLM30
Serie no.	22047065

Coupling

Trailer hitch	✓
Manufacturer	VBG 795
Air operated coupling device	✓
V "KN air"	75
D-value	200
Dc-Value	130
Coupling height mm	600

Dimensions

External height mm	4000
External width mm	2550
External length mm	10000
Internal height mm	2670
Internal width mm	2470
Internal length mm	7330
Light inside box	✓
Cubic meters	48

Weight

Loading capacity kg	ca. 13755
Overall weight kg	26000
Tare weight kg	ca. 12245

Truck body / box

Bottom	27 mm wisa plywood
Box type	Plywood
Make	Tarfurgo
Model year	2023
Foldable lashing rings	✓

Beskrivelse

For immediate delivery

DAF XF 480 6x2 - Brand new

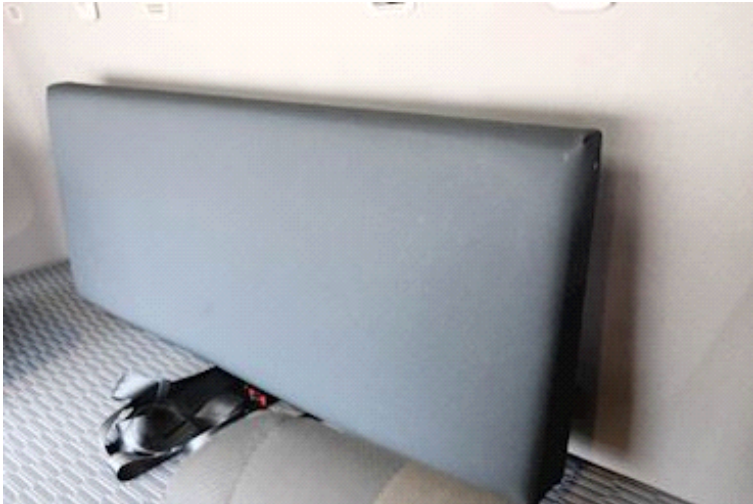
Constructed with Tarfurgo plywood fixed box with the following internal bed dimensions: L7330 x W2470 x H2670 (Ext. H 4000 mm)
4800 mm Wheelbase - DHOLLANDIA lift 2 Ton - VBG 795 57 mm draw

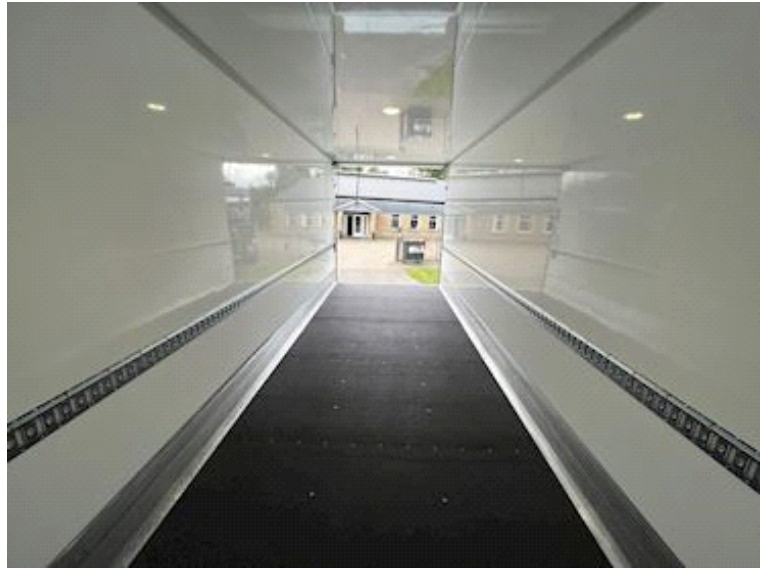
Equipped with: XF cabin w/1 berth - Refrigerator - 620 liter tank - Adaptive cruise control - Extra pedals that can be removed - 1 row of lashings inside the box - Light inside the box

3 year factory warranty

If interested, contact us on +45 8724 4370 / Salg@scanvo.dk, or see our selection of distribution vehicles at www.scanvo.dk







TarFurgo		EN 12642-XL		
Vehicle body in compliance with		P (16 000 kg)		
		<small>(P is the test value)</small>		
Loading height up to	200mm	800mm	Max height	
Front wall	13 000 daN	10 000 daN	7 848 daN	
Rear wall	-	-	4 700 daN	
Side walls	-	10 000 daN	6 278 daN	
Number of laths per section				

