

MAN TGX 26-640 6x4 BL sa, Tractor



Scanvo Trucks Danmark A/S
 Hårup Skovvej 7, Hårup
 8600 Silkeborg

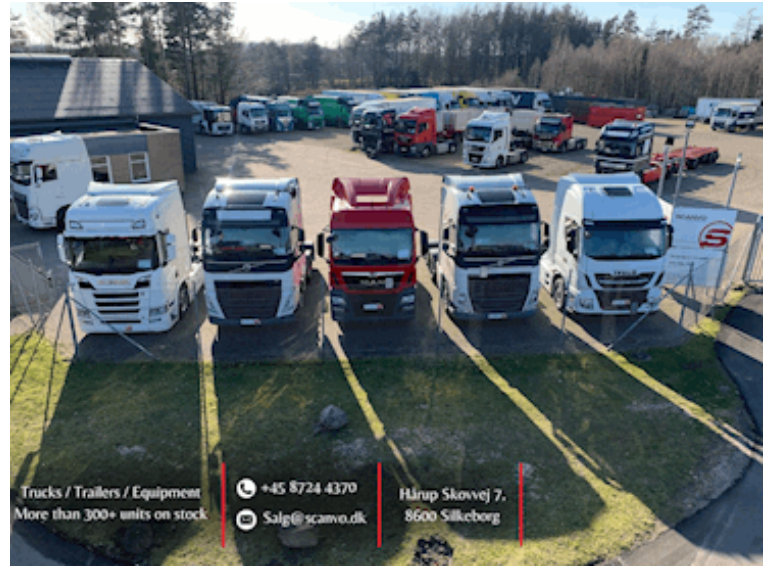
Sælger
 Salgsafdeling
 salg@scanvo.dk
 +45 8724 4370
 +45 3046 2148 / +45 2498 2148

Basis	
Type	Tractor Unit
Aksel	6x4
Stand	As new
Registration	
Model year	2021
Reg. date	04-02-2021
Reg. no.	CW72952
Latest inspection	12-06-2024
Chassis number (VIN)	WMA30KZZ0MP155867
Ref. no.	JM
Engine and transmission	
Engine	15,2 ltr
Hp	640
Km	332000
Gear box	AS Tronic aut shift
EURO type	6
Number of tanks	1
Litre of tank	370
Rear axle, single interchange	✓
PTO gearbox	✓
Adblue litre of tank	60
Without clutch pedal	✓
Tyres	
% remaining	xx
Dimensions	
385/65R22,5 - 315/80R22,5 - 315/80R22,5	

Suspension	
Front, parable	✓
Rear, air	✓
Brakes	
Disc brake	✓
ABS	✓
Engine brake	EVBec
Fahrhaus ausen	
Extra Lamps	✓
Warninglight	✓
Color	Mammoth Tree Met (Isuzu Persian Ro)
Spoilers	
Spoilers	✓
Lightbox	✓
Fog lights	✓
extra spotlights	✓
Chassis	
Wheelbase mm	3300
Axle load, front kg	9000
Axle load, rear kg	13000 + 13000
Hydraulic installation	✓
Gear box cooler	✓
Closed sides	✓
Hydraulic 2.	✓
Aluminium cover	✓

Cab	
Cab type	GM sleeper cab
Number of sleeper berths	2
Rear-view camera	✓
Engine cab heater	✓
Equipment kit	Komfort +
Radio	✓
Refrigerator	✓
Walkie	✓
Navigation	✓
Lane-assistent	✓
Distance radar	✓
Thermo	✓
Bluetooth	✓
Automatic air conditioning	✓
Automatic disaster Brake (FCW)	✓
Radial bolster	
Make	x
Pneumatic	✓
Height mm	xxxx
Weight	
Overall weight kg	26000

Nye og brugte containere
Mere end 100 enheder!



Trucks / Trailers / Equipment
More than 300+ units on stock

+45 8724 4370
Salg@scanvo.dk

Hårup Skovvej 7,
8600 Silkeborg