

Mercedes-Benz Antos 2533 L, Closed box



Scanvo Trucks Danmark A/S
 Hårup Skovvej 7, Hårup
 8600 Silkeborg

Sælger
 Salgsafdeling
 salg@scanvo.dk
 +45 8724 4370
 +45 3046 2148 / 2498 2148 / 2497 2148

Basis	
Type	Truck
Aksel	6x2*4
Stand	Very fine

Registration	
Model year	2017
Reg. date	12-09-2017
Reg. no.	DW70725
Latest inspection	31-08-2023
Chassis number (VIN)	WDB96302010178387
Ref. no.	7634

Engine and transmission	
Hp	330
Km	591000
Gear box	aut power shift
EURO type	6
Number of tanks	1
Litre of tank	500
Rear axle, single interchange	✓
Adblue litre of tank	80
Without clutch pedal	✓

Fahrhaus ausen	
Color	White
Xenon Lights	✓
extra spotlights	✓
roof spoiler	✓
Blitz lights	✓

Cab	
Cab type	Stream Space 2,3
Air-conditioning	✓
Number of sleeper berths	hvilebriks
Equipment kit	Safety pakke
Radio	✓
Lane-assistent	✓
Inverter 24V-220V	✓
Multifunction steering wheel	✓
Automatic disaster Brake (FCW)	✓

Chassis	
Wheelbase mm	6100
Axle load, front kg	8000
Axle load, rear kg	19000
Working light	✓
Steerable axle	✓

Tyres	
% remaining	40 - 10 - 30
Dimensions	385/65R22,5 - 315/70R22,5 - 315/70R22,5

Brakes	
Disc brake	✓
ABS	✓
Engine brake	✓

Suspension	
Front, air	✓
Rear, air	✓

Dimensions	
External height mm	3670
External width mm	2550
External length mm	12000
Internal height mm	2290
Internal width mm	2500
Internal length mm	9800
Load highness at back mm	2250
Light inside box	✓
Cubic meters	56
Truck bed height mm	1250

Weight	
Loading capacity kg	13325
Overall weight kg	26000
Tare weight kg	12675

Truck body / box	
Bottom	alu profil
Box type	Alu kasse
Make	Schmitz
Lashing rails on the sides	✓
Serial no.	9009415
Model year	8/2017

Lift	
Lift kg	2500
Make	BÄR
Top shutter	✓
Radio remote controle	✓
Hight at platform mm	2000
Model year	2017
Model	BC 2500 S4

Beskrivelse

Mercedes-Benz Antos 2533 L 6x2*4 - year 2017

Schmitz 24 pallets alu. box model MKO no 9009413 internal dimensions: L 9800 x W 2460 x H 2290 mm - bed base height 1250 mm - external total height 3670 mm - aluminum profile bottom - top flap - light in box - 1 row of lashing rail

2500kg BÄR lift with radio control - 2000 mm aluminum lift plate

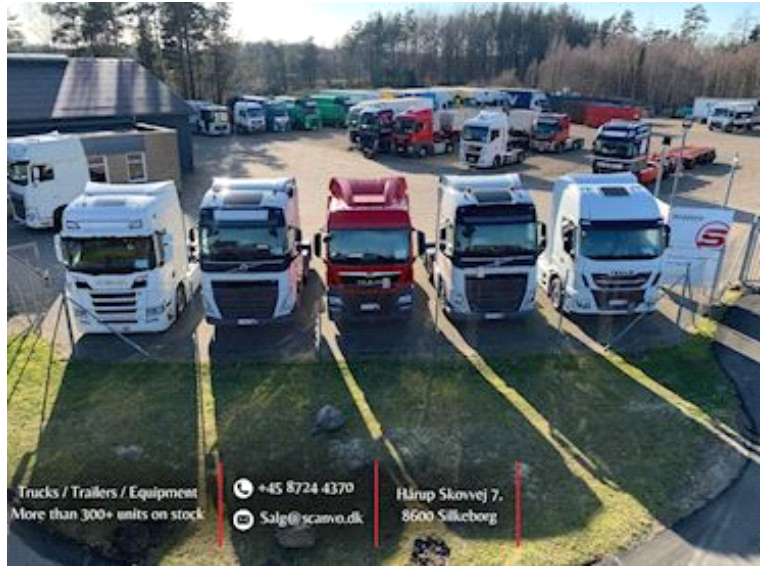
Classic Space 2.3 cab with Safty package - air conditioning - roof spoiler - Cruise control - Lane assist + Catastrophe brake - Powershift Aut. gear shift - Air suspension front + rear - hydraulic steering + liftable bogie which makes the truck more manoeuvrable

Well maintained 1 owner company car - can be delivered with or without preparation

- AN OFFER YOU CAN'T REFUSE

If interested, contact us on +45 8724 4370 / salg@scanvo.dk or see our selection of distribution vehicles at www.scanvo.dk

Nye og brugte containere
 Mere end 100 enheder!



Trucks / Trailers / Equipment
 More than 300+ units on stock

+45 8724 4370
 Salg@scanvo.dk

Hårup Skovvej 7,
 8600 Silkeborg







