

Krone ZZB 18 on ELZ - mekanisk styrbar 1. aksel, Dolly



Scanvo Trucks Danmark A/S
Hårup Skovvej 7, Hårup
8600 Silkeborg

Sælger
Salgsafdeling
salg@scanvo.dk
+45 8724 4370
+45 3046 2148 / 2498 2148 / 2497 2148

Registration		Brakes		Coupling	
Model year	2020	Disc brake	✓	Air-coupling	duromatic
Reg. date	29-06-2020	ABS	✓	Manufacturer	57 mm trækøje
Reg. no.	DP7295	Weight		V "KN air"	36
Chassis number (VIN)	wkezz000000922855	Loading capacity kg	14980	V "KN no air"	48
Ref. no.	7594	Overall weight kg	18000	Variable drawbar	ja
Basis		Tare weight kg	3020	Coupling height mm	fra 400 til 800 mm
Type	Trailer	Suspension		Coupling pressure	1000
Aksel	2	Air	✓	Chassis	
Stand	As new	Radial bolster		Axle load, front kg	9000
Tyres		Make	SAF/Holland	Axle load, rear kg	9000
% remaining	60 - 75	Fixed	✓	Wheelbase to 1. axel mm	3542 - 3942
Dimensions	385/65R22,5	Height mm	1100	Shaft type	SAF
				Compulsive shaft	✓
				Self steering	✓

Beskrivelse

This dolly has a mechanically forced 1st axle which makes it more friendly on the turning radius

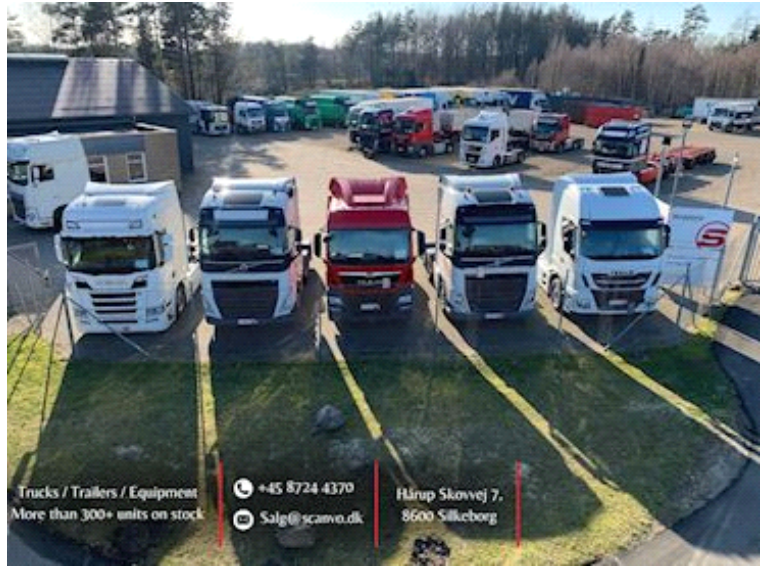
KRONE 18 ton dolly model with variable drawbar coupling height from 400 to 800 mm via the front of the drawbar, in addition the drawbar can be moved from xxxx to xxxx mm with 100 mm positions - 57 mm draw eye - stool height 1150 mm

SAF 9 ton axles with air suspension drum brakes - coke gray chassis frame - 385/65R22.5 tire mounting - LED lights - MXN camera connector

Contact Scanvo for more info +45 87244370 - or email salg@scanvo.dk

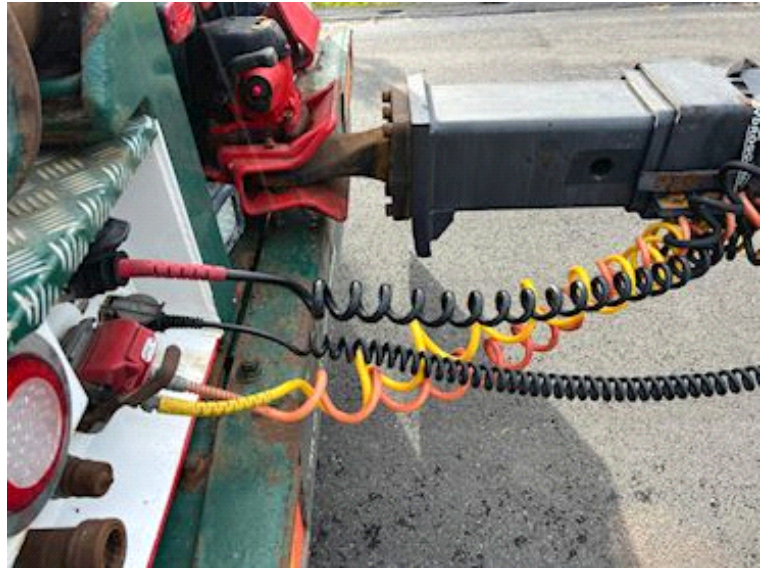
As a dealer of products from the Austrian manufacturer Hangler, which for many years has produced powerful, strong trailer products for some of the toughest tasks. The product range is wide ranging - from machine, built-in, heavy load or curtain trailers, carts, etc. with this you receive a well-equipped product for the tough tasks that are often carried out in the Scandinavian and Nordic countries.





Nye og brugte containere
Mere end 100 enheder!







SCANVO
TRUCKS DANMARK A/S

