

HFR PO 24 3 akslet container hænger uden tip, Transfer



Scanvo Trucks Danmark A/S
Hårup Skovvej 7, Hårup
8600 Silkeborg

Sælger
Salgsafdeling
salg@scanvo.dk
+45 8724 4370
+45 3046 2148 / 2498 2148 / 2497 2148

Registration	
Model year	2020
Reg. date	16-01-2020
Reg. no.	DH8760
Chassis number (VIN)	UH9P0241928HF1373
Ref. no.	7133

Basis	
Type	Trailer
Aksel	3
Stand	Very fine

Suspension	
Air	✓

Tyres	
% remaining	70 - 70 - 70
Dimensions	265/70R19,5

Brakes	
Drum brakes	✓
ABS	✓

Weight	
Loading capacity kg	19040
Overall weight kg	24000
Tare weight kg	4960

Coupling	
Air-coupling	Duomatic
Manufacturer	57 mm trækøje
Variable drawbar	Ja
Coupling height mm	850
Dimensions	
Internal length mm	6000
Truck bed height mm	1060
Chassis	
Axle load, front kg	10000
Axle load, rear kg	18000
Toolbox	✓
Total length mm	8400 - 8900
Shaft type	BPW
Liftable axles	2.

Beskrivelse

HFR model PO 24 transfer / container 3 axle hanger (lightweight model) without tip

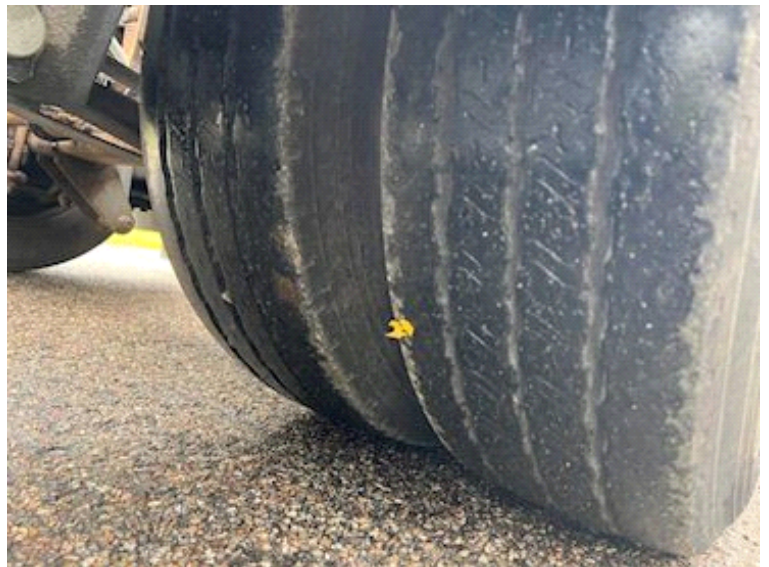
BPW axles - Air suspension - Drum brakes - Axle lift on 2nd axle - Tool box with built-in raise/lower valves for the air suspension - Galvanized chassis frame - Ferry hooks mounted on chassis - Movable tow bar with 57 mm towing eye - KBL = min 8400 mm to 8900 mm - Note curb weight of only 4960 kg

Built for 6000 max 6500 mm containers. ONLY built for middle rollers, and the container is loaded from the rear

Contact Scanvo +45 87244370 or via email salg@scanvo.dk

See more transport solutions, also transfer hangers and new and used hoist containers with 3-way tips at www.scanvo.dk







WABCO TRAILER EBS S

HPR PQ 24
 URH9Q2A1928HF1373
 RDK28173A
 80 80 4S/3M
 X
 ID 24N

g/c	pm (bar)		pm (bar)		g/c		g/c		TR (kPa)		
	6.5	2.0	0.7	2.0	6.5	6.5	6.5				
1	2000	0.5	2.3	10000	3.7	0.4	1.6	6.8	30	150	
2	1800	0.5	2.4	9000	3.7	0.5	2.1	6.8	1	24/30	150
3	1800	0.5	2.4	9000	3.7	0.5	2.1	6.8	-	24/30	150
4	0	-	-	0	-	-	-	-	-	-	-
5	0	-	-	0	-	-	-	-	-	-	-



