

Mercedes-Benz Antos 1827 LNR 4x2, Curtains



Scanvo Trucks Danmark A/S
Hårup Skovvej 7, Hårup
8600 Silkeborg

Sælger
Salgsafdeling
salg@scanvo.dk
+45 8724 4370
+45 3046 2148 / 2498 2148 / 2497 2148

Basis	
Type	Truck
Aksel	4x2
Stand	Very fine

Registration	
Model year	2016
Reg. date	26-10-2016
Reg. no.	BE97939
Latest inspection	18-09-2024
Chassis number (VIN)	WDB96300410094524
Ref. no.	7553

Engine and transmission	
Engine	OM936LA - 7,7 ltr
Hp	270
Km	309000
Gear box	Aut power shift
EURO type	6
Number of tanks	1
Litre of tank	ca. 350
Rear axle, single interchange	✓
Adblue litre of tank	ca. 80
Without clutch pedal	✓

Fahrhaus ausen	
Color	hvid / orange
roof spoiler	✓

Truck body / box	
Bottom	alu profil
Boards	✓
Height of boards mm	900
Kinnegrip	✓
Box type	alu fragtlad
Package door	✓
Holes for Sockets	✓
Foldable lashing rings	✓

Cab	
Cab type	x
Air-conditioning	✓
Radio	✓
Lane-assistent	✓
Distance radar	✓
Multifunction steering wheel	✓
Automatic disaster Brake (FCW)	✓

Chassis	
Wheelbase mm	5800
Axle load, front kg	7500
Axle load, rear kg	11500
Toolbox	✓

Tyres	
% remaining	60/60 - 100/80
Dimensions	315/70R22,5

Brakes	
Disc brake	✓
ABS	✓

Suspension	
Front, air	✓
Rear, air	✓

Weight	
Loading capacity kg	8135
Overall weight kg	18000
Tare weight kg	9865

Dimensions	
Internal height mm	2640
Internal width mm	2470
Internal length mm	8520
Load highness at back mm	2640
Light inside box	✓
Cubic meters	55
Truck bed height mm	1150

Lift	
Lift kg	2500
Make	Zepro
Hight at platform mm	2000
Model year	2016
Model	ZHD 2500-155 MA

Serie no.	x
-----------	---

Tent	
Sliding curtain in the sides	✓
Fiberglass Roof	✓

Beskrivelse

Mercedes Antos 1827 LNR Euro 6

- AN OFFER YOU CAN'T REFUSE

Alu freight pallet - 21 pallets - internal pallet dimensions: L 8550 x W 2470 x H 2640 mm - loading in the back 2640 mm - anodised 900 mm aluminum sides with chin grab posts - fixed fiberglass roof - aluminum profile pallet - pallet height 1150 mm - packing member L 850 x H 550 mm on the right side at the back - top flap

2500 kg Zepro lift - 2000 mm steel plate - remote control for the lift

automatic gear change - Full air suspension - 5800 mm wheelbase

Medium cab - air conditioning - spoiler set - White cab from factory orange on cab is painted

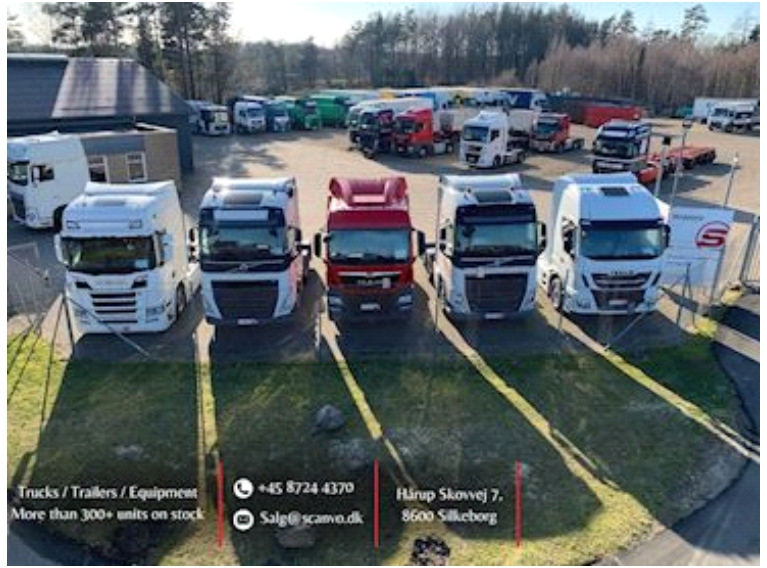


SCANVO
TRUCKS DANMARK A/S

Can be delivered with additional preparation and new curtain sides - inspected 13/10-2023 - regularly serviced at Mercedes according to display

Contact Scanvo Trucks +45 87244370 - email salg@scanvo.dk

Nye og brugte containere
Mere end 100 enheder!



Trucks / Trailers / Equipment
More than 300+ units on stock

+45 8724 4370

Salg@scanvo.dk

Hårup Skovvej 7,
8600 Silkeborg

