

Scania G450LB 8x2*6 HNB - HMF 2620K kran, Tipper/crane



Scanvo Trucks Danmark A/S
 Hårup Skovvej 7, Hårup
 8600 Silkeborg

Sælger
 Salgsafdeling
 salg@scanvo.dk
 +45 8724 4370
 +45 3046 2148 / 2498 2148 / 2497 2148

Basis

Type	Truck
Aksel	8x2*6
Stand	Fine

Registration

Model year	2015
Reg. date	24-11-2015
Reg. no.	AL94109
Latest inspection	05-01-2024
Chassis number (VIN)	YS2G8X20005401603
Ref. no.	7580

Engine and transmission

Hp	450
Km	259000
Gear box	GRSO905 opticruise aut shift
EURO type	6
Number of tanks	1
Litre of tank	300
Rear axle, single interchange	✓
Ad-blue	✓
PTO engine	✓
Adblue litre of tank	80
Without clutch pedal	✓

Fahrhaus ausen

Extra Lamps	✓
Warninglight	✓
Color	Green Dark Int69015
additional worklights	✓

Crane

Tonne-metre	22,7
Remote control	✓
Front mounted	✓
number of Extension	5
Make	HMF
Model year	2015
Range mtr	14,7
Double Piping	✓
Type	2620K5
Chassis number (VIN)	1081188 / 5309649
Oil cooler	✓

Cab

Cab type	CG16 m-cab
Rear-view camera	✓
Engine cab heater	✓
Radio	✓
Refrigerator	✓
Walkie	✓
Navigation	✓
Air suspension cab	✓
Automatic air conditioning	✓

Chassis

Wheelbase mm	4900
Toolbox	✓
Total length mm	8700
Hydraulic 2.	✓
Working light	✓
Hydraulically steered rear axle	✓

Tyres

% remaining	80/80 - 100/75 - 100/100 - 80/60
Dimensions	385/55R22,5 - 385/55R22,5 - 315/60R22,5 - 315/60R22,5

Brakes

Disc brake	✓
ABS	✓

Suspension

Front, air	✓
Rear, air	✓

Weight

Loading capacity kg	18200
Overall weight kg	35000

Coupling

Electrical coupling	EBS + 15 polet lysstik
Air-coupling	Duromatic
Trailer hitch	✓
Manufacturer	Ringfeder 57 mm
Air operated coupling device	✓
V "KN air"	63
Coupling height mm	750

Dimensions

External width mm	2550
Internal height mm	800
Internal width mm	2470
Internal length mm	5740
Cubic meters	11

Tipper

3-way	✓
automatic tailgate	✓

Working lights 
Inspection date 9/2024



Beskrivelse

Scania G450 LB 8x2-6 HNB Euro 6

HMF pendant tip internal pallet dimensions: L 5740 x W 2470 x H 800 mm - 3-way tip with pallet width - pendant full-side opening on the left for both water and vertical - 3 divided fold-down aluminum sides on the right side - 300 mm aut rear bumper - extension bumper - tool boxes - oil routed backwards to tip

57 mm pull - coupling length 8700 mm

HMF 2620K5 crane year 2015 with work lights and hose reels double piping for tools - reach 14.7 mtr = lifts 1,300 kg - inspection carried out at HMF 25/9-2024

4900 mm axle distance - hydraulically swiveling bogie - air conditioning - engine/cabin heater - rear camera - cyclist camera - Flash lights front+rear + sides - rotor blinker on light bracket - LED work lights on rear wall, under bed, step boxes and in back

CG 16 medium-length cab with low entry - air conditioning - engine/cabin heater - refrigerator - rest bench - navigation - reverse + mirror camera - air-suspended cab - walkie

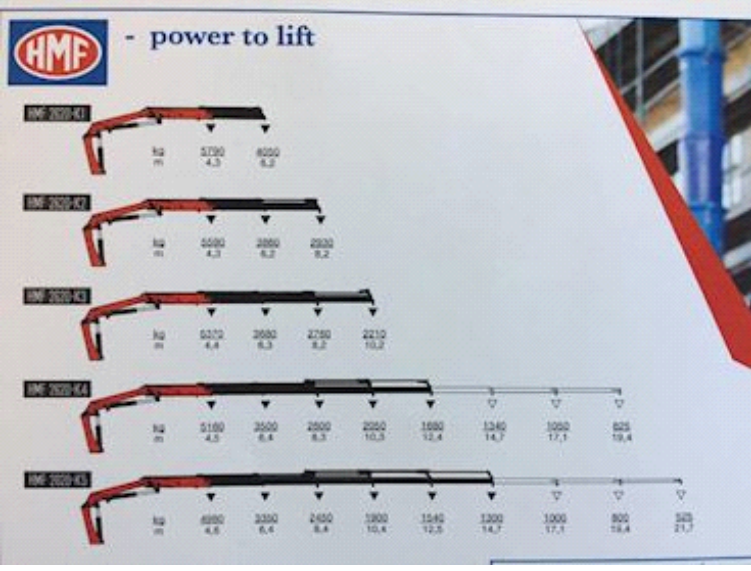
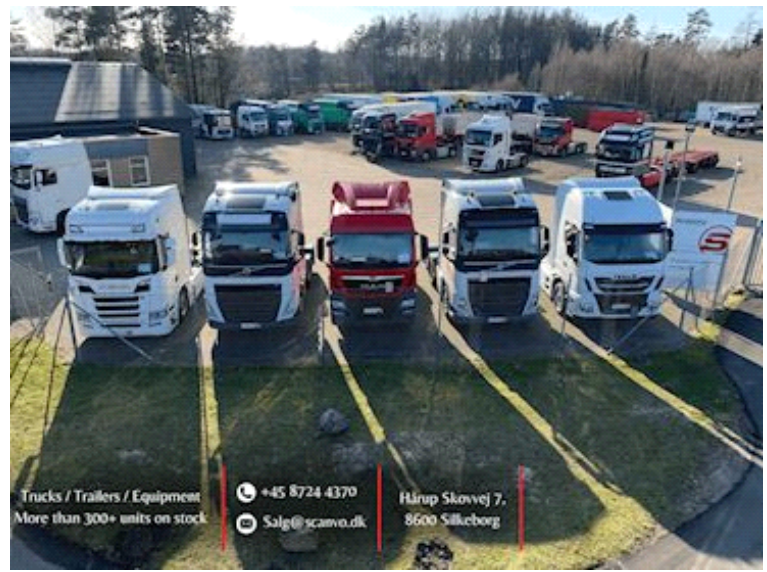
Appears in good and serviced condition - delivered with a new crane inspection 9/2024 and inspection 1/2024 offset to the new weight regulations 35,000 kg load of 18,200 kg

Service with oil change on engine with filters at 240,900 km d 24/12-2023

Contact Scanvo +45 87244370 - or via email salg@scanvo.dk

Visit our website www.scanvo.dk - always more than 300 pieces. newer: trucks - trailers - trailers - containers + cranes much more transport material

Nye og brugte containere
Mere end 100 enheder!




Model	Capacity (kg)	Reach (m)	Height (m)
HMF 2020-K1	3200	4.3	8.0
HMF 2020-K2	5000	4.3	8.2
HMF 2020-K3	5270	6.3	8.2
HMF 2020-K4	5180	4.3	8.4
HMF 2020-K5	6900	6.4	8.4



