

MAN TGS 35-500 8x2*6 BL - HMF 2620K5 kran, Tipper/crane



Scanvo Trucks Danmark A/S
 Hårup Skovvej 7, Hårup
 8600 Silkeborg

Sælger
 Salgsafdeling
 salg@scanvo.dk
 +45 8724 4370
 +45 3046 2148 / 2498 2148 / 2497 2148

Basis	
Type	Truck
Aksel	8x2*6
Stand	Very fine

Registration	
Model year	2018
Reg. date	15-05-2018
Reg. no.	cz20142
Latest inspection	06-05-2024
Chassis number (VIN)	WMA90SZZ1JP101001
Ref. no.	7583

Engine and transmission	
Hp	500
Km	305000
Gear box	AS Tronic aut shift
EURO type	6
Number of tanks	1
Litre of tank	ca. 390
Rear axle, single interchange	✓
Adblue litre of tank	80
Without clutch pedal	✓

Fahrhaus ausen	
Color	mørkeblå
Fog lights	✓
Blitz lights	✓

Tyres	
% remaining	100 - 100 - 100 - 80
Dimensions	385/65R22,5 - 385/65R22,5 - 315/80R22,5 - 385/65R22,5

Brakes	
Disc brake	✓
ABS	✓

Cab	
Cab type	Sleeper cab
Number of sleeper berths	1
Mirror camera	✓
Rear-view camera	✓
Engine cab heater	✓
Radio	✓
Walkie	✓
Navigation	✓
Leather seats	✓
Coolbox	✓
Multifunction steering wheel	✓
Air in cabin for cleaning	✓
Automatic air conditioning	✓
Loading camera	✓
Leather seats	✓

Chassis	
Wheelbase mm	5300
Axle load, front kg	18000
Axle load, rear kg	19000
Toolbox	✓
Total length mm	9300
Hydraulic 2.	✓
Working light	✓
Hydraulically steered rear axle	✓

Suspension	
Front, parable	✓
Rear, air	✓

Weight	
Overall weight kg	35000/32000
Tare weight kg	17850

Coupling	
Electrical coupling	EBS + 13 polet lysstik + MXN
Air-coupling	duromatic
Trailer hitch	✓
Manufacturer	Rockinger 57 mm
Air operated coupling device	✓
V "KN air"	75
Coupling height mm	800

Dimensions	
Internal height mm	1000
Internal width mm	2470
Internal length mm	6220
Cubic meters	15,3
Truck bed height mm	1330

Crane	
Tonne-metre	22,7
Remote control	✓
Front mounted	✓
number of Extension	5
Make	HMF
Model year	2017
Range mtr	14,7
Double Piping	✓
Type	2620K5
Chassis number (VIN)	5310638
Oil cooler	✓
Working lights	✓
Inspection date	22/9-2023

Truck body / box	
Box type	Pendel 3 vejs tiplad
Tippers	
3-way	✓
automatic tailgate	✓

Beskrivelse

MAN TGS 35-500 8x2*6 BL euro 6

HMF pendant tip internal pallet dimensions: L 6220 x W 2470 x H 1000 mm - 3-way tip with pallet width - pendant full-side opening on the left and fold-down aluminum sides on the right side - automatic back cover - tool boxes - 2 strings of oil routed to the tip - 57 mm draw with air operation - coupling length 9300 mm

- AN OFFER YOU CAN'T REFUSE

HMF 2620K5 crane radio control work lights and hose reels double piping for tools - reach 14.7 mtr. = lifts 1,300 kg

5300 mm axle distance - hydraulically swiveling bogie - air conditioning - engine/cabin heater - reversing, loading & cyclist camera - Flash lights front+rear + blizbom on the roof - extra high beam lights - plenty of LED work lights on the back and under the bed and in the back



SCANVO
TRUCKS DANMARK A/S

Prepared for snow plow equipment with 24 volt power plug pulled forward and snow plow lights

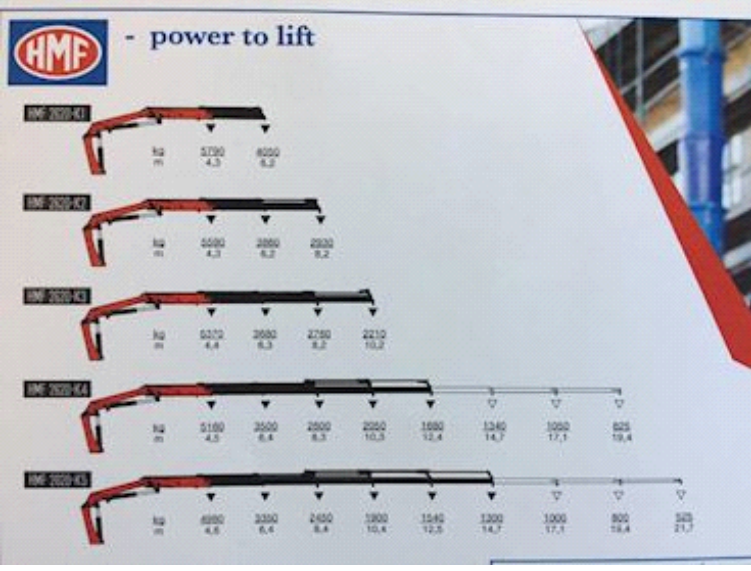
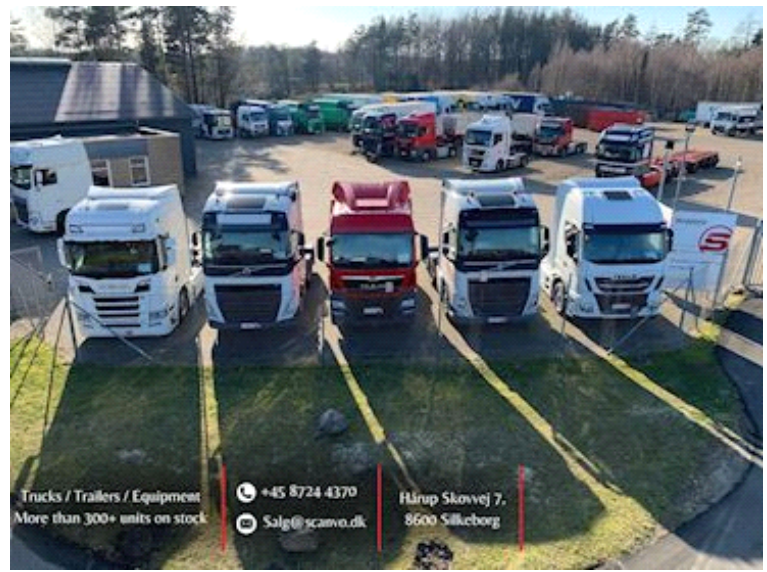
Medium cab - air conditioning - engine/cabin heater - refrigerator - 1 bed - leather seats and engine cover - navigation - reverse + mirror camera - walkie

Appears in very good condition and serviced condition - delivered with a new crane inspection 9/2024 and inspection 1/2024 offset to the new weight regulations 35,000 kg load of 18,200 kg

Service cf. dispaaly

Contact Scanvo +45 87244370 - or via email salg@scanvo.dk

Visit our website www.scanvo.dk - always more than 300 pieces. newer: trucks - trailers - trailers - containers + cranes much more transport material




Parameter	Value
Capacity	1000, 2000, 3000, 5100, 6900 kg
Height	4.3, 4.4, 4.5, 4.6 m
Reach	8.0, 8.2, 8.3, 8.4, 10.3, 12.4, 13.4, 14.7, 17.1, 19.4 m
Weight	4000, 5000, 6000, 7000, 8000 kg







