

# Kel-Berg 20 ton 7150 / 7450 mm containerlåse, Swap bodies



Scanvo Trucks Danmark A/S  
 Hårup Skovvej 7, Hårup  
 8600 Silkeborg

Sælger  
 Salgsafdeling  
 salg@scanvo.dk  
 +45 8724 4370  
 +45 3046 2148 / 2498 2148 / 2497 2148

Registration	
Model year	2004
Reg. date	05-03-2004
Reg. no.	KU8054
Chassis number (VIN)	SKBD20B203AKE9443
Ref. no.	7318

Tyres	
% remaining	70/80 - 60/50
Dimensions	265/70R19,5

Brakes	
Drum brakes	✓✓
ABS	✓✓

Coupling	
Electrical coupling	EBS + 2 x 7 polet
Air-coupling	duomatic
Manufacturer	38 mm
Variable drawbar	ja - 900mm
Coupling height mm	800

Basis	
Type	Trailer
Aksel	2
Stand	Fine

Weight	
Loading capacity kg	16700
Overall weight kg	20000
Tare weight kg	3300

Dimensions	
Truck bed height mm	
Neutral = 1060 - Sænket = 990mm - Hævet	1400mm

Suspension	
Air	✓

Chassis	
Axle load, front kg	10000
Axle load, rear kg	10000
Shaft type	BPW

## Beskrivelse

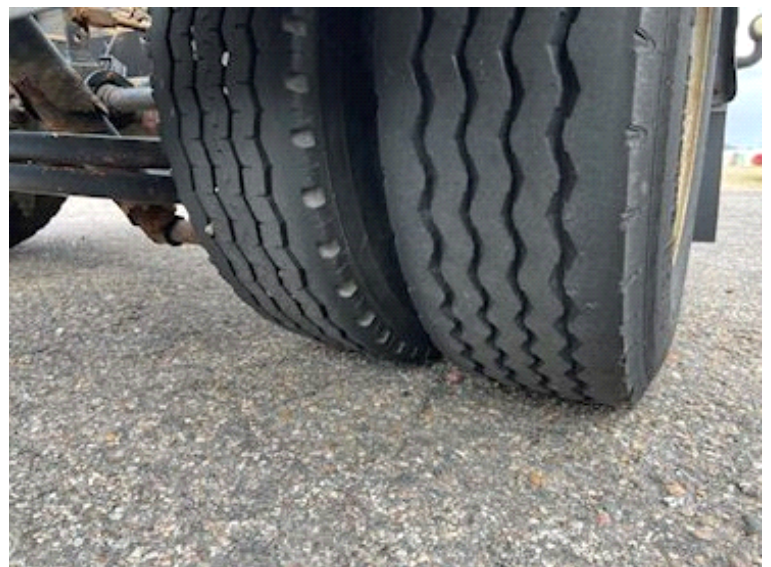
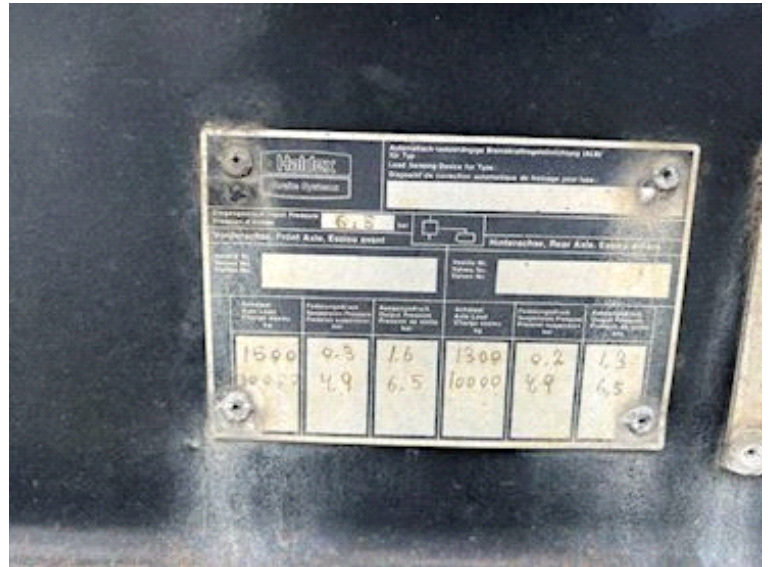
Kel-berg 20 ton variable load hanger built for 7150 / 7450 mm mm variable load - container locks driving height in 1060 mm - Lowest pos. 990mm. Highest pos. 1400mm - BPW axles - drum brakes - air suspension (Long travel) - Chassis has some surface rust - movable drawbar (900mm) with 38mm draw eye - coupling height 800mm - coupling length 9280mm - Flash light

We also have a large selection of used 7150 - 7450 mm swap bodies

Contact Scanvo Trucks +45 87244370 or via email salg@scanvo.dk  
 Visit our website where you will always find more than 300 units

We are also a dealer of products from the Austrian manufacturer Hangler. For many years, Hangler has produced powerful, strong trailer products for some of the toughest tasks. The product range is wide ranging - from machine, built-in, heavy load or curtain trailers, carts, etc. with this you receive a well-equipped product for the tough tasks that are often carried out in the Scandinavian and Nordic countries.













TRUCK / TRAILERS / EQUIPMENT  
MORE THAN 300+ UNITS ON STOCK

+45 8724 4370  
SCANVO.DK

HÅRUPSKOVVEJ 7, 8600  
SILKEBORG