

Volvo FH460 6x2*4, Container frame/Container



Scanvo Trucks Danmark A/S
Hårup Skovvej 7, Hårup
8600 Silkeborg

Sælger
Salgsafdeling
salg@scanvo.dk
+45 8724 4370
+45 3046 2148 / 2498 2148 / 2497 2148

Basis		Cab		Chassis	
Type	Truck	Cab type	Globetrotter	Wheelbase mm	4900
Aksel	6x2*4	Number of sleeper berths	2	Axle load, front kg	8000
Stand	As new	Sunroof	✓	Axle load, rear kg	19000
Registration		Equipment kit	Komfort	Toolbox	✓
Model year	2020	Radio	✓	Gear box cooler	✓
Reg. date	29-09-2020	Refrigerator	✓	Total length mm	xxxx
Chassis number (VIN)	YV2RTY0C8LB322102	Lane-assistent	✓	Hydraulically steered rear axle	✓
Ref. no.	7278	Cab airheater	✓	Coupling	
Engine and transmission		Distance radar	✓	Electrical coupling 2 x 15 polet EBS - lys stik	
Hp	460	Multifunction steering wheel	✓	Air-coupling	duromatic
Km	278000	Air suspension cab	✓	Manufacturer	Rockinger 400G150
Gear box	I-shift	Automatic air conditioning	✓	Coupling height mm	450 eller 800 mm
EURO type	6	Automatic disaster Brake (FCW)	✓	Suspension	
Number of tanks	2	Electric windows	✓	Front, air	✓
Litre of tank	450 + 610	Fahrhaus ausen		Rear, air	✓
Rear axle, single interchange	✓	Color	Winter white/NCS	Dimensions	
Ad-blue	✓	Fog lights	✓	Truck bed height mm	1100 - 1230
Adblue litre of tank	100	roof spoiler	✓	Weight	
Without clutch pedal	✓	Tyres		Overall weight kg	26000
Brakes		% remaining	80 - 80 - 60		
Disc brake	✓	Dimensions			
ABS	✓	385/55R22,5 - 315/70R22,5 - 385/55R22,5			
Engine brake	VEB+				

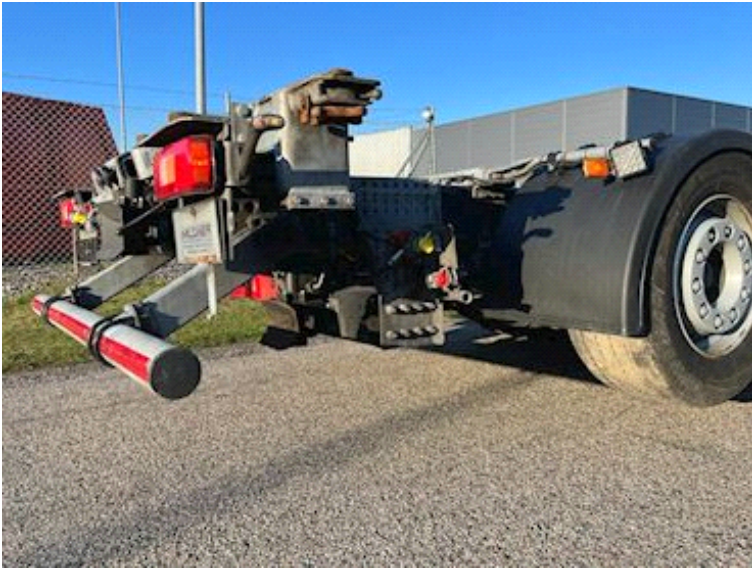
Beskrivelse

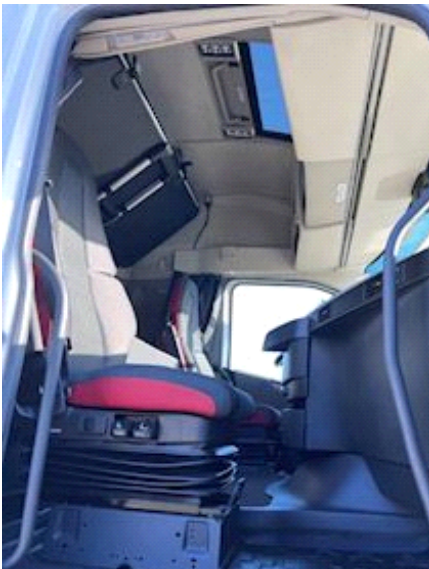
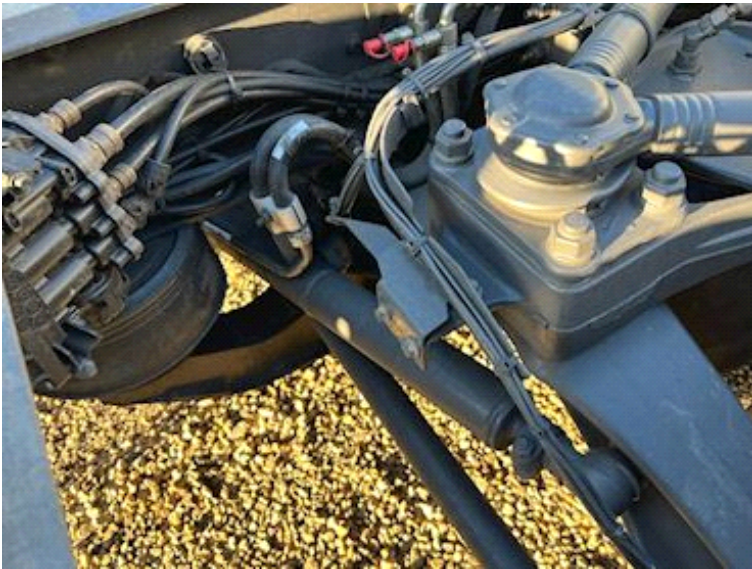
Volvo FH460 6x2*4 Euro 6

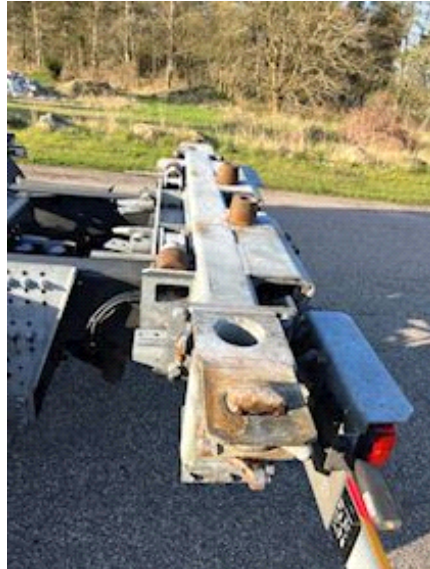
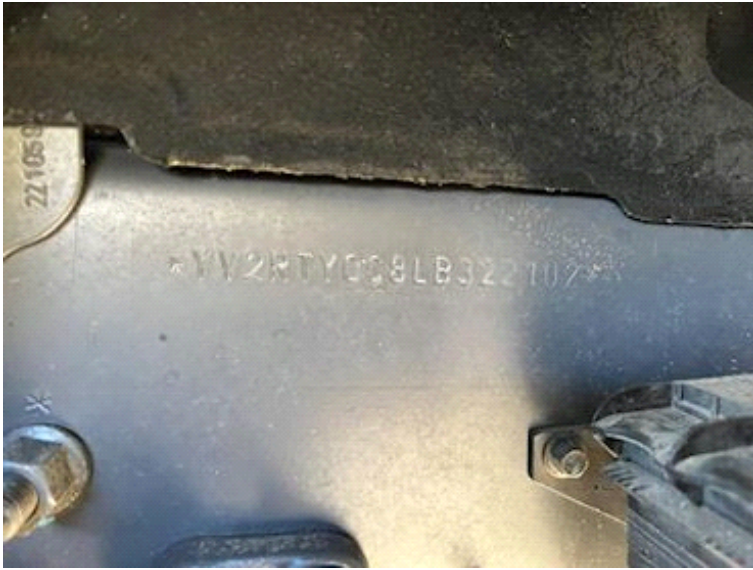
Built with galvanized multi-lock container locks from Mildner for 7820 / 7450 mm swappable pallets - Adjustable ride height from 1100 to 1230 mm - 38 mm draw in 820 mm ride height + underpinned 50 mm carriage draw with 430 mm - tool box - 2 x x LED reversing lights can be delivered with interchangeable box - Closed or with curtain sides - can be seen on our website.

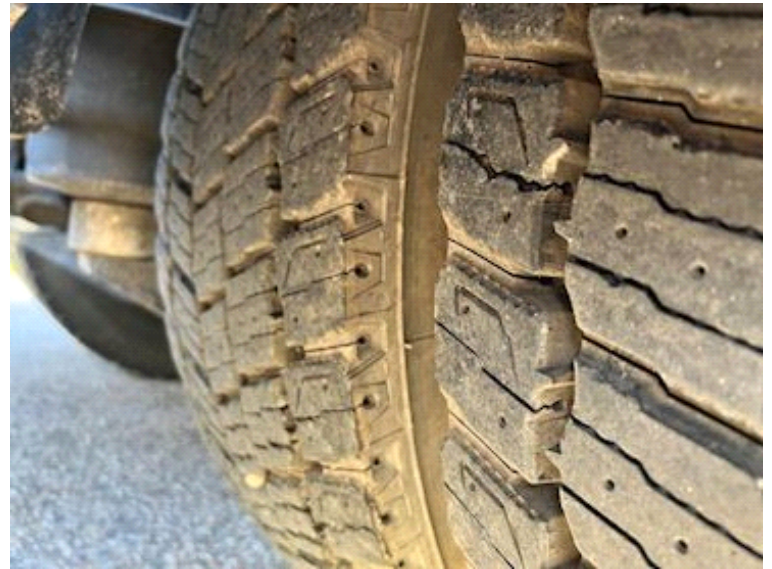
Well equipped: Full air suspension - VEB+ engine brake - Hydraulic steerable/ liftable boogie axle - globetrotter cab - comfort cab package - 2 berths - 33 l. refrigerator under the berth - air conditioning - cabin heater - factory fitted parking cooler - wagon/track assistant - ACC / FCW with auto emergency brake + etc.

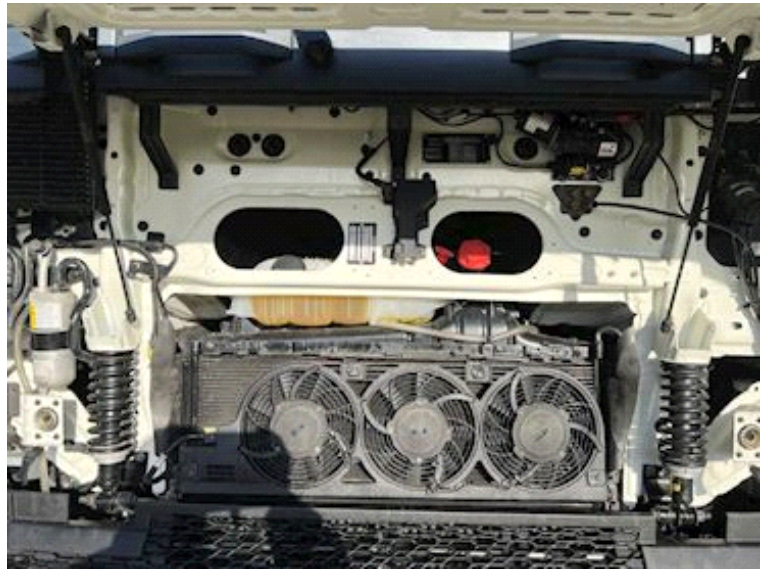
Contact Scanvo for more info +45 87244370 - Mail salg@scanvo.dk
See other transport equipment on our website www.scanvo.dk













Nye og brugte containere
Mere end 100 enheder!



Trucks / Trailers / Equipment
More than 300+ units on stock

+45 8724 4370

Salg@scanvo.dk

Hårup Skovvej 7,
8600 Silkeborg