

# Schmitz SCB\*S2 33 pallers city - lift, Fridge



Scanvo Trucks Danmark A/S  
 Hårup Skovvej 7, Hårup  
 8600 Silkeborg

Sælger  
 Salgsafdeling  
 salg@scanvo.dk  
 +45 8724 4370  
 +45 3046 2148 / 2498 2148 / 2497 2148

Basis		Registration		Dimensions	
Type	Semi-Trailer	Model year	2016	External height mm	3900
Aksel	2	Reg. date	22-01-2016	External width mm	2600
Stand	Very fine	Reg. no.	BF4572	Internal height mm	2450
Suspension		Latest inspection	27-04-2023	Internal width mm	2509
Air	✓	Chassis number (VIN)	wsm00000002012282	Internal length mm	13550
Brakes		Ref. no.	7514	Light inside box	✓
Drum brakes	✓	Weight		Refrigeration	
ABS	✓	Loading capacity kg	26020	Refrigerator, brand	Carrier
Chassis		Overall weight kg	35000	Hours, diesel	9264
Wheelbase to 1. axel mm	7170	Tare weight kg	8980	Hour, electrical	41
Shaft type	SAF	King pin kg	15000	Electric connection	✓
Steerable axle	✓	Truck body / box		Type	Vector 1550
Compulsive shafts	2.	Bottom	alu	Coolbox brand	Schmitz
Tyres		Make	Schmitz	Lift	
% remaining	50/90 - 50/90	Removable partition	✓	Lift kg	2000
Dimensions	425/65 R 22.5			Make	Dhollandia
				Top shutter	✓
				Hight at platform mm	2000
				Model year	2015
				Model	DHLM30
				Serie no.	15105014

## Beskrivelse

Well maintained Schmitz SCB\*S2 33 pallets - 2 axle city refrigerated trailer  
 internal bed dimensions: L 13550 x H 2450 x W 2509 mm  
 Alu base - LED ceiling light - movable dividing wall in the longitudinal direction

Carrier refrigerator model Vector 1550 - 380 volts / diesel operation  
 Electric operating hours = 41 - Diesel operating hours = 9,264 - last service performed on 2/5-22 at 8,151 hours

2000 kg Dhollandia DHLM30 lift 3000 mm steel plate - top flap - reversing camera - battery station in box on chassis frame excl. batteries  
 a 220 volt charging socket has been inserted into the right side of the box at the back

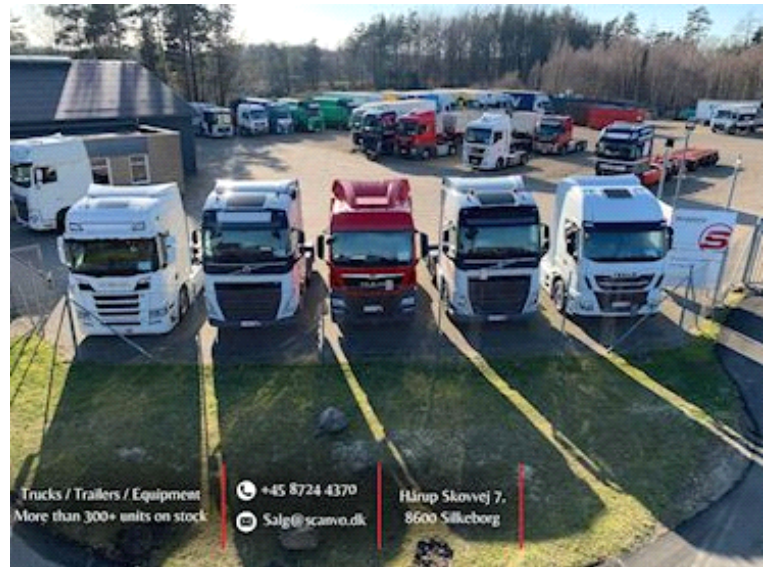
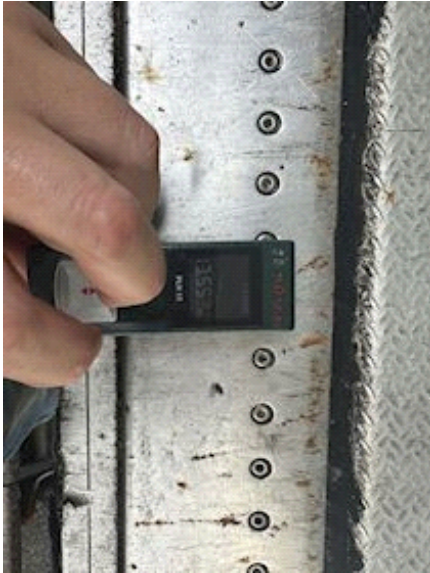
SAF axles - drum brakes - air suspension - mechanically forced rear axle - ALC / central lubrication

Contact Scanvo Trucks +45 87244370 - email salg@scanvo.dk

See other trailers on our website [www.scanvo.dk](http://www.scanvo.dk) Always more than 300 units in stock

We are also a dealer of products from the Austrian manufacturer Hangler. For many years, Hangler has produced powerful, strong trailer products for some of the toughest tasks. The product range is wide ranging - from machine, built-in, heavy-duty or curtain trailers, carts, etc. with this you receive a well-equipped product for the tough tasks that are often carried out in the Scandinavian and Nordic countries







Nye og brugte containere  
Mere end 100 enheder!

