

Hangler VTS-H 400 4 akslet - 2 delt ramper, Low loader



Scanvo Trucks Danmark A/S
 Hårup Skovvej 7, Hårup
 8600 Silkeborg

Sælger
 Salgsafdeling
 salg@scanvo.dk
 +45 8724 4370
 +45 3046 2148 / 2498 2148 / 2497 2148

Registration		Brakes		Coupling	
Model year	2025	Drum brakes	✓	Brand	VBG 57 mm
Chassis number (VIN)	0003	ABS	✓	Air-coupling	Duomatic
Ref. no.	7593	Weight		Variable drawbar	ja
Brand new	✓	Loading capacity kg	22540	Coupling height mm	800
Basis		Overall weight kg	30000	Dimensions	
Type	Trailer	Tare weight kg	7460	Internal length mm	5750 + 2850mm på repo
Aksel	4	Total weight, low loader kg	42800	Width mm	2550
Stand	Brand new	Load capacity, low loader kg	35340	Load highness at side mm	1080mm på rapo
Tyres		Low loader		Truck bed height mm	900
% remaining	100	Outriggers with planks	✓	Chassis	
Dimensions	235/75R17,5	Double ramp	✓	Toolbox	✓
Auto transport		Hydraulic ramps	✓	Total length mm	9950-10550mm
Platform length	8600 mm	Wide load signs	✓	Shaft type	SAF
Suspension		Truck body / box		Axle load kg	11 + 11 + 11 + 11
Air	✓	Bottom 70 mm træplanker, riflet stålbund			
		Lashing rings in the bottom	✓		

Beskrivelse

New Hangler VTS-H 400 4-axle machine trailer - double ramps

8600 mm bed length - Fully galvanized chassis and ramps
 hydraulic galvanized ramps 2 split ramps L 2800mm + 800mm - W 750mm - hydraulic lateral shift is operated via the vehicle's hydraulics, the hydraulic system is also fitted with a throttle valve so the pressure can be adjusted manually
 SAF 11 ton axles with drum brakes and air suspension with raising/lowering function
 235/75R17.5 tire mounting with M+S approved pattern
 70 mm wooden planks at the bottom, as well as grooved steel above the wheel arches - 2 x 5 pcs. chop stick holes in edge rail - 2 x 8 pcs. 10 ton lashing eyes in edge rail - 2 pcs 5 ton at the front - low loading height of 900 mm - Extra 70 mm for widening planks which are located in the middle recessed in the bottom of the tray
 Storage magazine for chains / straps built into rapo
 movable drawbar with 57 mm draw eye, minimum coupling length 9950 mm can be increased by 600 mm
 stainless tool box
 LED 3 chamber rear lights
 4 pcs. extendable wide load signs with reflex planks and LED position lights up to 3000 mm
 4 pcs. LED work lights (2 pcs. at the side + 2 pcs. at the back)
 Removable rotor indicator on one ramp

Approved for block wagon driving 60 km/h : 42,800 kg / load 35,340 kg - at 90 km/h : 30,000 kg / load 22,540 kg

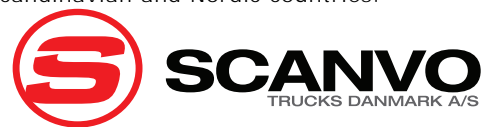
Pipeline expected to be ready for delivery week 21 2024 - Archive photos from previous deliveries, the one on the way is with 2 split ramps

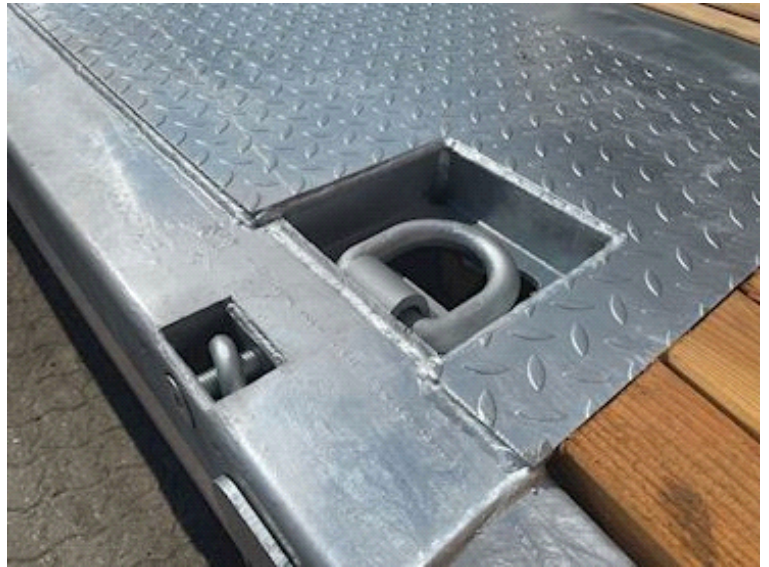
Subject to printing and typing errors

We always have a wide selection of new and used units - Call for more information on delivery time - AN OFFER YOU CAN'T REFUSE
 - Contact us today on +45 8724 4370 to find out more!

As a dealer of products from the Austrian manufacturer Hangler, which for many years has produced powerful, strong trailer products for some of the toughest tasks. The product range is wide ranging - from machine, built-in, heavy load or curtain trailers, carts, etc. with

this you receive a well-equipped product for the tough tasks that are often carried out in the Scandinavian and Nordic countries.









Trucks / Trailers / Equipment
More than 300+ units on stock

+45 8724 4370
Salg@scanvo.dk

Hårup Skovvej 7,
8600 Silkeborg